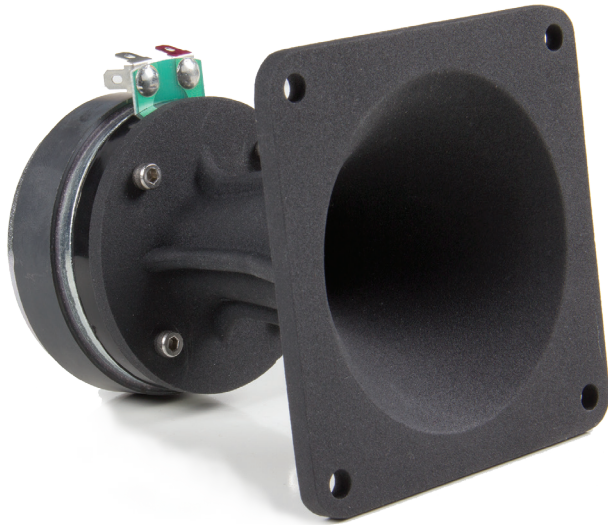
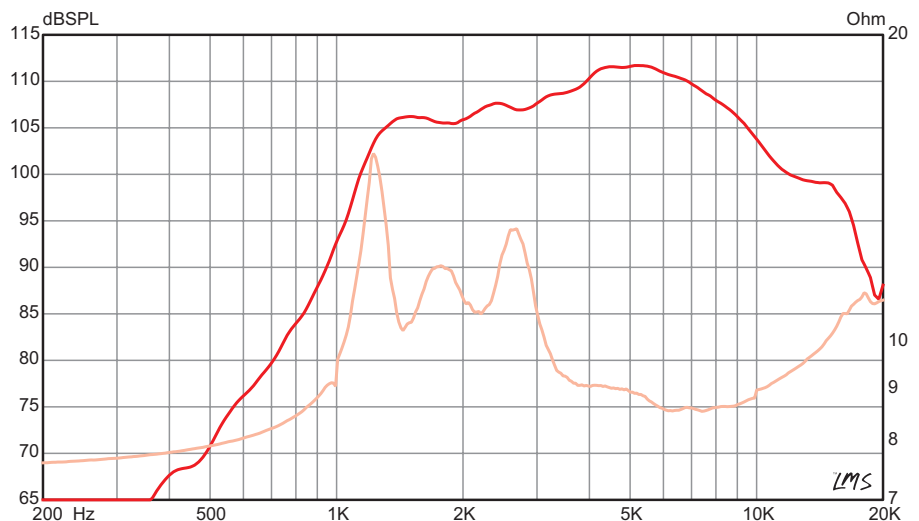


# BGH25-8



HORN TYPE	Exponential
DISPERSION	60°
NOMINAL IMPEDANCE	8Ω
POWER RATING**	25W (AES)
FREE AIR RESONANCE	1225 Hz
USABLE FREQUENCY RANGE	2.5 kHz – 20 kHz
RECOMMENDED X-OVER	12dB/oct @ 2.5kHz
SENSITIVITY***	105.2dB (1W/1m across 2.5kHz-20kHz on axis)
MAGNET WEIGHT	10 oz.
VOICE COIL DIAMETER	1" , 25.4 mm
Re	7.1 Ω
MINIMUM IMPEDANCE	8.6Ω @ 7.4 kHz
MOUNTING HOLES DIAMETER	4x 0.26" , 6.6 mm
MOUNTING HOLES BCD	4.94" , 125.4 mm
WIDTH/HEIGHT/DEPTH	4.2" x 4.2" x 4.8"
WIDTH/HEIGHT/DEPTH (mm)	107 x 107 x 121
CUT OUT	3.5" , 88.9 mm
VOLUME DISPLACED	19.20 cu.in.
WEIGHT	2.2lbs , 1 kg
VOICE COIL FORMER	Polyimide
DIAPHRAGM MATERIAL	Phenolic
MAGNET COMPOSITION	Ferrite
HORN MATERIAL	Aluminum





*From design and manufacturing to the stage or studio. Once you've experienced the performance of Eminence, you'll never accept anything else.*

## MISSION STATEMENT

*Eminence is dedicated to providing the best Quality, Value and Service to meet our customers' needs.*

## FOOTNOTES

- \* Please consult [www.eminence.com](http://www.eminence.com) for specifications of models with alternative impedances.
- \*\* Multiple units exceed published ratings evaluated under EIA 426A specification while tested in a free-air, non-temperature-controlled environment.
- \*\*\* The average output across the usable frequency range when applying 1W/1m into the nominal impedance. i.e: 2.83V/8Ω, 4V/16Ω. Eminence response curves are measured under the following conditions: All speakers are tested at 1W/1m using a variety of test set-ups for the appropriate impedance | LMS using 0.25" supplied microphone (software calibrated) mounted 1m from wall/baffle | 2 ft. x 2 ft. baffle is built into the wall with the speaker mounted flush against a steel ring for minimum diffraction | Carver PM-120 amplifier | 2700 cu. ft. chamber with fiberglass on all six surfaces (three with custom-made wedges).
- \*\*\*\* BETA 8CX, 10CX, and 12CX are coaxial speakers with tweeter sold separately. Published usable frequency response contingent upon use of ASD:1001 HF Driver.
- \*\*\*\*\* Multiple units exceeded published ratings evaluated under EIA-426A or AES specification while mounted on Eminence's H290, H290S, or H2EA horn in a non-temperature-controlled environment.
- \*\*\*\*\*The average on axis output across the entire usable frequency range when applying 1W/1m into the nominal impedance, i.e. 2.83V/8Ω, 4V/16Ω. Eminence response curves are measured under the following conditions: All speakers are tested at 1W/1m using a variety of test set-ups for the appropriate impedance | LMS using 0.25" supplied microphone (software calibrated) mounted 1m from wall/baffle | 2ft x 2ft baffle is built into the wall with horn front mounted | Carver PM-120 amplifier | 2700 cu.ft. chamber with fiberglass on all six surfaces (three with custom-made wedges).

Prices, specifications and product cosmetics are subject to change without notice.

**EMINENCE SPEAKER LLC**

838 Mulberry Pike, Eminence, KY 40019



*Follow us:*

[EMINENCE.COM](http://EMINENCE.COM)

