



PROFESSIONAL SERIES

KAPPA PRO-10A

Recommended for pro audio in a sealed midrange, vented mid-bass, and bass enclosure.



SPECIFICATION

Nominal Basket Diameter	10.0", 254 mm
Nominal Impedance*	8 Ω
Power Rating**	
Watts	500 W
Music Program	1000 W
Resonance	46 Hz
Usable Frequency Range	102 Hz – 2.0 kHz
Sensitivity***	97.0 dB
Magnet Weight	80 oz.
Gap Height	.375", 9.5 mm
Voice Coil Diameter	3.0", 76 mm

THIELE & SMALL PARAMETERS*

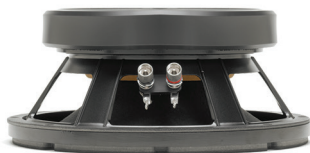
Fs	46 Hz
Re	6.50 Ω
Le	1.15 mH
Qms	10.10
Qes	0.20
Qts	0.20
Vas	1.84 cu.ft., 52.20 liters
Vd	110.0 cc
Cms	0.31 mm/N
BL	18.80 T-M
Mms	38 grams
EBP	230
Xmax	3.20 mm
Sd	344.9 cm ²
Xlim	10.9 mm

MOUNTING INFORMATION

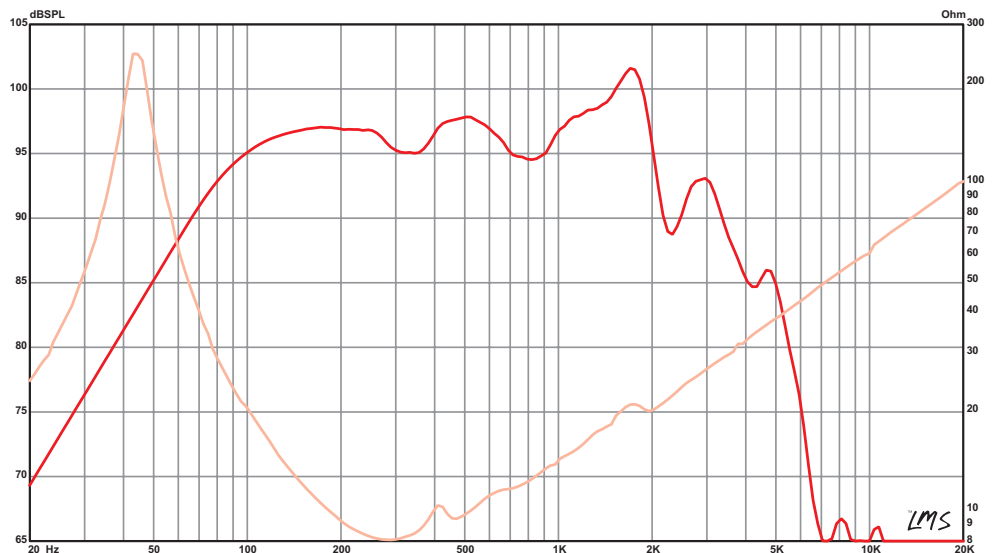
Recommended Enclosure Volume	
Sealed	7.00–9.90 liters, 0.25–0.35 cu.ft.
Vented	12.00–28.00 liters, 0.43–1.00 cu.ft.
Driver Volume Displaced	0.061 cu.ft., 1.72 liters
Overall Diameter	10.25", 260.4 mm
Baffle Hole Diameter	9.13", 231.9 mm
Front Sealing Gasket	Yes
Rear Sealing Gasket	Yes
Mounting Holes Diameter	0.27", 6.9 mm
Mounting Holes B.C.D.	9.75", 247.7 mm
Depth	4.33", 110.0 mm
Net Weight	15.30 lbs , 6.94 kg
Shipping Weight	16.40 lbs , 7.44 kg

MATERIALS OF CONSTRUCTION

- Copper voice coil
- Polyimide former
- Ferrite magnet
- Vented core
- Die-cast aluminum basket
- Paper cone
- Cloth cone edge
- Solid composition paper dust cap



FREQUENCY RESPONSE & IMPEDANCE CURVE*



LEARN MORE AT EMINENCE.COM



From design and manufacturing to the stage or studio. Once you've experienced the performance of Eminence, you'll never accept anything else.

MISSION STATEMENT

Eminence is dedicated to providing the best Quality, Value and Service to meet our customers' needs.

FOOTNOTES

- * Please consult www.eminence.com for specifications of models with alternative impedances.
- ** Multiple units exceed published ratings evaluated under EIA 426A specification while tested in a free-air, non-temperature-controlled environment.
- *** The average output across the usable frequency range when applying 1W/1m into the nominal impedance. i.e: 2.83V/8Ω, 4V/16Ω. Eminence response curves are measured under the following conditions: All speakers are tested at 1W/1m using a variety of test set-ups for the appropriate impedance | LMS using 0.25" supplied microphone (software calibrated) mounted 1m from wall/baffle | 2 ft. x 2 ft. baffle is built into the wall with the speaker mounted flush against a steel ring for minimum diffraction | Carver PM-120 amplifier | 2700 cu. ft. chamber with fiberglass on all six surfaces (three with custom-made wedges).
- **** BETA 8CX, 10CX, and 12CX are coaxial speakers with tweeter sold separately. Published usable frequency response contingent upon use of ASD:1001 HF Driver.
- ***** Multiple units exceeded published ratings evaluated under EIA-426A or AES specification while mounted on Eminence's H290, H290S, or H2EA horn in a non-temperature-controlled environment.
- *****The average on axis output across the entire usable frequency range when applying 1W/1m into the nominal impedance, i.e. 2.83V/8Ω, 4V/16Ω. Eminence response curves are measured under the following conditions: All speakers are tested at 1W/1m using a variety of test set-ups for the appropriate impedance | LMS using 0.25" supplied microphone (software calibrated) mounted 1m from wall/baffle | 2ft x 2ft baffle is built into the wall with horn front mounted | Carver PM-120 amplifier | 2700 cu.ft. chamber with fiberglass on all six surfaces (three with custom-made wedges).

Prices, specifications and product cosmetics are subject to change without notice.

EMINENCE SPEAKER LLC

838 Mulberry Pike, Eminence, KY 40019



Follow us:

EMINENCE.COM

