

WGX880TN

LINE ARRAY SOURCE



LINE
ARRAY
SOURCE

220 W
continuous program
power capacity

75 mm (3 in)
aluminium voice coil

Line Array optimized
Waveguide with
DE880TN driver

Titanium diaphragm

Neodymium magnet
assembly with
shorting copper cap

108 dB
sensitivity

500 - 17000 Hz
response

120°
max horizontal
coverage

SPECIFICATIONS

Horizontal Coverage	120 ° max
Active Radiating Factor	93.7 %
Recommended Crossover ¹	0.8 kHz
Waveguide Material	Cast Aluminium
Nominal Impedance	8 Ω
Minimum Impedance	8.1 Ω
Power Handling	
Nominal (AES) ²	110 W
Continuous Program ³	220 W
Sensitivity (1W/1m) ⁴	108 dB
Frequency Range ⁵	0.5 - 17 kHz
Voice Coil Diameter	75 mm (3 in)
Winding Material	CCAW
Diaphragm Material	Titanium
Flux Density	1.85 T
Magnet Material	Neodymium Ring

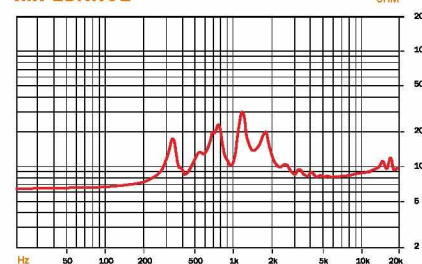
MOUNTING AND SHIPPING INFORMATION

Waveguide Baffle	
Cutout	153x25 mm (6x1 in)
Driver diameter	124 mm (4.9 in)
Dimensions	163x130x235 mm (6.4x5.1x9.3 in)
Net Weight	3.1 kg (6.83 lb)
Shipping Weight	3.2 kg (7.05 lb)
Shipping Box	245x140x175 mm (9.6x5.5x6.9 in)

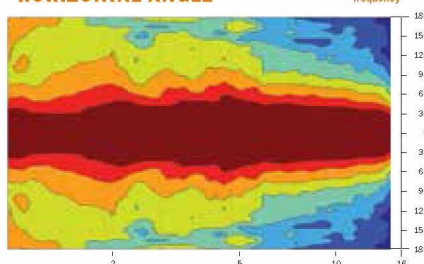
SENSITIVITY



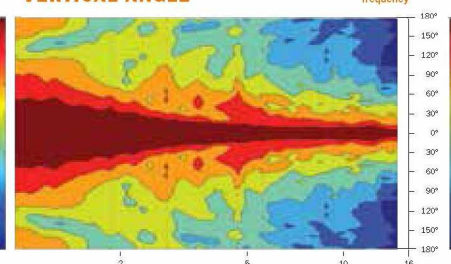
IMPEDANCE



HORIZONTAL ANGLE



VERTICAL ANGLE



¹ 12 dB/oct. Or higher slope high-pass filter.

² Two hour test made with continuous pink noise signal (6 dB crest factor) within the range from the recom-

mended crossover frequency to 20 kHz. Power calculated on rated minimum impedance.

³ Power on Continuous Program is defined as 3 dB greater than the

Nominal rating.

⁴ Applied RMS Voltage is set to 2.83 V for 8 ohms Nominal Impedance.

⁵ Waveguide mounted on 90° x 10° bell horn.