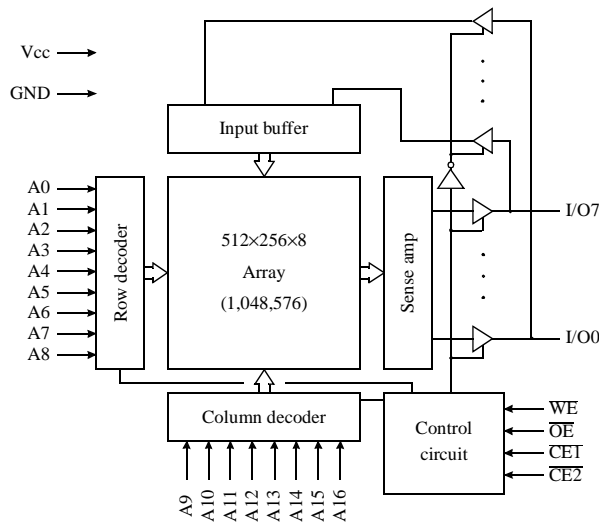


128K×8 CMOS SRAM

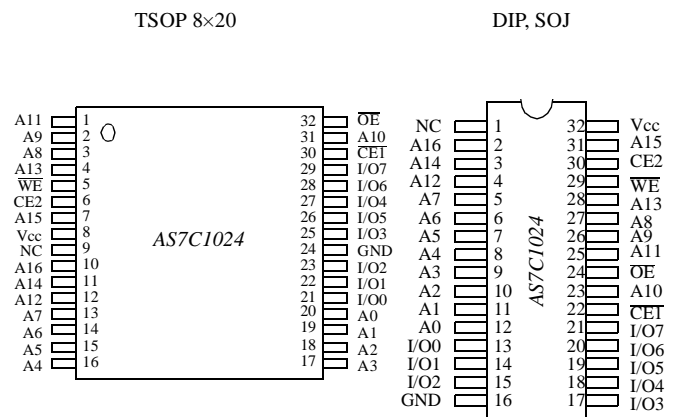
Features

- Organization: 131,072 words × 8 bits
- High speed
 - 10/12/15/20 ns address access time
 - 3/3/4/5 ns output enable access time
- Low power consumption
 - Active: 660 mW max (15 ns cycle)
 - Standby: 55 mW max, CMOS I/O
 - Very low DC component in active power
- 2.0V data retention
- Equal access and cycle times
- Easy memory expansion with \overline{CET} , CE2, \overline{OE} inputs
- TTL/LVTTL-compatible, three-state I/O
- 32-pin JEDEC standard packages
 - 300 mil PDIP and SOJ
 - Socket compatible with 7C512 (64K×8)
 - 400 mil PDIP and SOJ
 - 8×20 TSOP
- ESD protection ≥ 2000 volts
- Latch-up current ≥ 200 mA
- 3.3V and 5.0V versions available
- Industrial and commercial temperature available

Logic block diagram



Pin arrangement



Selection guide

	7C1024-10	7C1024-12	7C1024-15	7C1024-20	Unit
	-	7C31024-12	7C31024-15	7C31024-20	
Maximum address access time	10	12	15	20	ns
Maximum output enable access time	3	3	4	5	ns
Maximum operating current	AS7C1024 175	160	120	110	mA
	AS7C31024 -	100	70	65	mA
Maximum CMOS standby current	10.0	10.0	10.0	10.0	mA

Shaded areas contain advance information.



Functional description

The AS7C1024 and AS7C31024 are high performance CMOS 1,048,576-bit Static Random Access Memories (SRAM) organized as 131,072 words \times 8 bits. It is designed for memory applications where fast data access, low power, and simple interfacing are desired.

Equal address access and cycle times (t_{AA} , t_{RC} , t_{WC}) of 10/12/15/20 ns with output enable access times (t_{OE}) of 3/3/4/5 ns are ideal for high performance applications. Active high and low chip enables ($\overline{CE1}$, CE2) permit easy memory expansion with multiple-bank memory systems.

When $\overline{CE1}$ is HIGH or CE2 is LOW the device enters standby mode. The standard AS7C1024 is guaranteed not to exceed 55 mW power consumption in standby mode. Both devices offer 2.0V data retention.

A write cycle is accomplished by asserting write enable (\overline{WE}) and both chip enables ($\overline{CE1}$, CE2). Data on the input pins I/O0-I/O7 is written on the rising edge of \overline{WE} (write cycle 1) or the active-to-inactive edge of $\overline{CE1}$ or CE2 (write cycle 2). To avoid bus contention, external devices should drive I/O pins only after outputs have been disabled with output enable (\overline{OE}) or write enable (\overline{WE}).

A read cycle is accomplished by asserting output enable (\overline{OE}) and both chip enables ($\overline{CE1}$, CE2), with write enable (\overline{WE}) HIGH. The chip drives I/O pins with the data word referenced by the input address. When either chip enable or output enable is inactive, or write enable is active, output drivers stay in high-impedance mode.

All chip inputs and outputs are TTL/LVTTL-compatible, and operation is from a single 5V supply (AS7C1024) or 3.3V supply (AS7C31024). The AS7C1024 and AS7C31024 are packaged in common industry standard packages.

Absolute maximum ratings

Parameter	Symbol	Min	Max	Unit
Voltage on any pin relative to GND	V_t	-0.5	+7.0	V
Power dissipation	P_D	-	1.0	W
Storage temperature (plastic)	T_{stg}	-55	+150	$^{\circ}C$
Temperature under bias	T_{bias}	-10	+85	$^{\circ}C$
DC output current	I_{out}	-	20	mA

Stresses greater than those listed under Absolute Maximum Ratings may cause permanent damage to the device. This is a stress rating only and functional operation of the device at these or any other conditions outside those indicated in the operational sections of this specification is not implied. Exposure to absolute maximum rating conditions for extended periods may affect reliability.

Truth table

$\overline{CE1}$	CE2	\overline{WE}	\overline{OE}	Data	Mode
H	X	X	X	High Z	Standby (I_{SB} , I_{SB1})
X	L	X	X	High Z	Standby (I_{SB} , I_{SB1})
L	H	H	H	High Z	Output disable
L	H	H	L	D_{out}	Read
L	H	L	X	D_{in}	Write

Key: X = Don't Care, L = LOW, H = HIGH

Recommended operating conditions

Parameter		Symbol	Min	Nominal	Max	Unit
Supply voltage	AS7C1024	V_{CC}	4.5	5.0	5.5	V
	AS7C31024	V_{CC}	3.0	3.3	3.6	V
		GND	0.0	0.0	0.0	V
Input voltage	AS7C1024	V_{IH}	2.2	-	$V_{CC} + 0.5$	V
	AS7C31024	V_{IH}	2.0	-	$V_{CC} + 0.5$	V
		V_{IL}	-0.5	-	0.8	V

$\dagger V_{IL} \text{ min} = -3.0V$ for pulse width less than $t_{RC}/2$.



DC operating characteristics ¹

Parameter	Symbol	Test conditions	-10		-12		-15		-20		Unit	
			Min	Max	Min	Max	Min	Max	Min	Max		
Input leakage current	$ I_{LI} $	$V_{CC} = \text{Max},$ $V_{in} = \text{GND to } V_{CC}$	-	1	-	1	-	1	-	1	μA	
Output leakage current	$ I_{LO} $	$\overline{\text{CE1}} = V_{IH} \text{ or } \text{CE2} = V_{IL},$ $V_{CC} = \text{Max},$ $V_{out} = \text{GND to } V_{CC}$	-	1	-	1	-	1	-	1	μA	
Operating power supply current	I_{CC}	$\overline{\text{CE1}} = V_{IL}, \text{CE2} = V_{IH},$ $f = f_{\text{max}}, I_{\text{out}} = 0 \text{ mA}$	AS7C1024	-	175	-	160	-	120	-	110	mA
			AS7C31024	-	-	-	100	-	70	-	65	mA
Standby power supply current	I_{SB}	$\overline{\text{CE1}} = V_{IH} \text{ or } \text{CE2} = V_{IL},$ $f = f_{\text{max}}$	-	55	-	50	-	40	-	40	mA	
			I_{SB1}	$\overline{\text{CE1}} \geq V_{CC}-0.2\text{V} \text{ or } \text{CE2} \leq 0.2\text{V},$ $V_{in} \leq 0.2\text{V} \text{ or } V_{in} \geq V_{CC}-0.2\text{V},$ $f = 0$	-	10	-	10	-	10	-	10
Output voltage	V_{OL}	$I_{OL} = 8 \text{ mA}, V_{CC} = \text{Min}$	-	0.4	-	0.4	-	0.4	-	0.4	V	
	V_{OH}	$I_{OH} = -4 \text{ mA}, V_{CC} = \text{Min}$	2.4	-	2.4	-	2.4	-	2.4	-	V	

Shaded areas contain advance information.

Capacitance ²

($f = 1 \text{ MHz}, T_a = \text{Room temperature}, V_{CC} = 5\text{V}$)

Parameter	Symbol	Signals	Test conditions	Max	Unit
Input capacitance	C_{IN}	A, $\overline{\text{CE1}}, \text{CE2}, \overline{\text{WE}}, \overline{\text{OE}}$	$V_{in} = 0\text{V}$	5	pF
I/O capacitance	$C_{I/O}$	I/O	$V_{in} = V_{out} = 0\text{V}$	7	pF

Read cycle ^{3,9,12}

Parameter	Symbol	-10		-12		-15		-20		Unit	Notes
		Min	Max	Min	Max	Min	Max	Min	Max		
Read cycle time	t_{RC}	10	-	12	-	15	-	20	-	ns	
Address access time	t_{AA}	-	10	-	12	-	15	-	20	ns	3
Chip enable ($\overline{\text{CE1}}$) access time	t_{ACE1}	-	10	-	12	-	15	-	20	ns	3, 12
Chip enable (CE2) access time	t_{ACE2}	-	10	-	12	-	15	-	20	ns	3, 12
Output enable ($\overline{\text{OE}}$) access time	t_{OE}	-	3	-	3	-	4	-	5	ns	
Output hold from address change	t_{OH}	2	-	3	-	3	-	3	-	ns	5
$\overline{\text{CE1}}$ LOW to output in Low Z	t_{CLZ1}	3	-	3	-	3	-	3	-	ns	4, 5, 12
CE2 HIGH to output in Low Z	t_{CLZ2}	3	-	3	-	3	-	3	-	ns	4, 5, 12
$\overline{\text{CE1}}$ HIGH to output in High Z	t_{CHZ1}	-	3	-	3	-	4	-	5	ns	4, 5, 12
CE2 LOW to output in High Z	t_{CHZ2}	-	3	-	3	-	4	-	5	ns	4, 5, 12
$\overline{\text{OE}}$ LOW to output in Low Z	t_{OLZ}	0	-	0	-	0	-	0	-	ns	4, 5
$\overline{\text{OE}}$ HIGH to output in High Z	t_{OHZ}	-	3	-	3	-	4	-	5	ns	4, 5
Power up time	t_{PU}	0	-	0	-	0	-	0	-	ns	4, 5, 12
Power down time	t_{PD}	-	10	-	12	-	15	-	20	ns	4, 5, 12

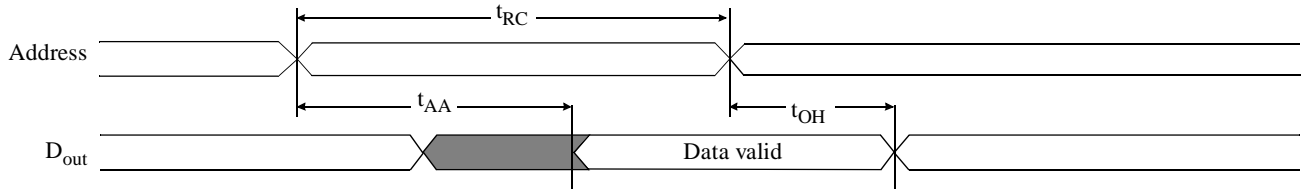


Key to switching waveforms

Rising input
 Falling input
 Undefined output/don't care

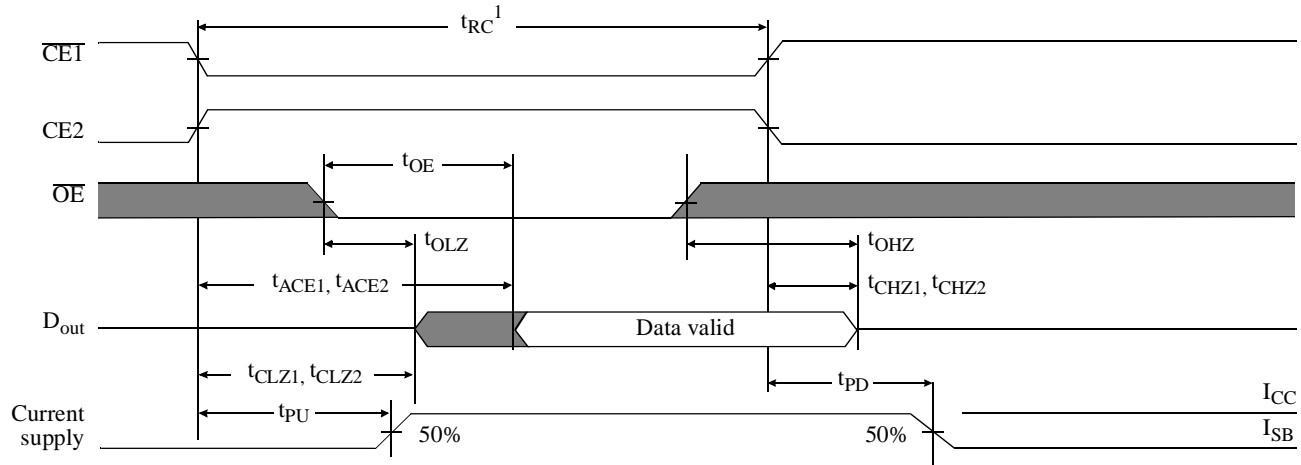
Read waveform 1 ^{3,6,7,9,12}

Address controlled



Read waveform 2 ^{3,6,8,9,12}

CE1 and CE2 controlled



Write cycle ^{11, 12}

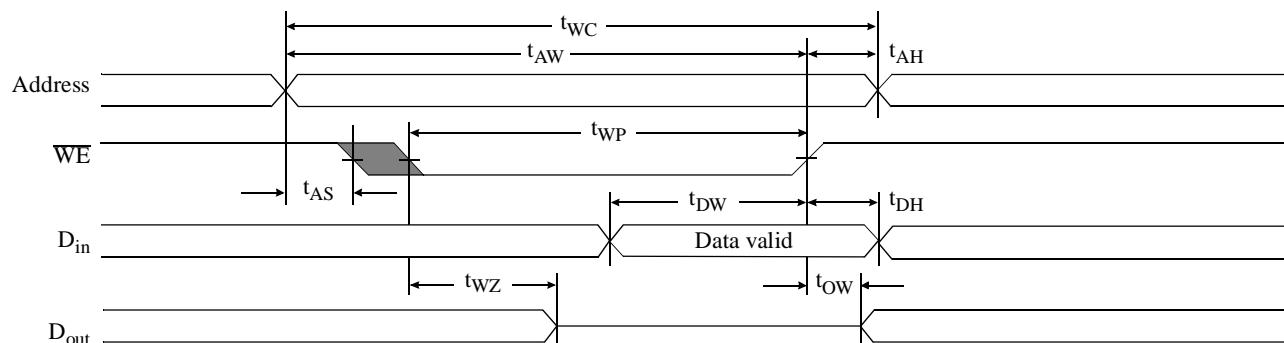
Parameter	Symbol	-10		-12		-15		-20		Unit	Notes
		Min	Max	Min	Max	Min	Max	Min	Max		
Write cycle time	t_{WC}	10	–	12	–	15	–	20	–	ns	
Chip enable (CE1) to write end	t_{CW1}	9	–	10	–	12	–	12	–	ns	12
Chip enable (CE2) to write end	t_{CW2}	9	–	10	–	12	–	12	–	ns	12
Address setup to write end	t_{AW}	9	–	10	–	12	–	12	–	ns	
Address setup time	t_{AS}	0	–	0	–	0	–	0	–	ns	12
Write pulse width	t_{WP}	7	–	8	–	9	–	12	–	ns	
Address hold from end of write	t_{AH}	0	–	0	–	0	–	0	–	ns	
Data valid to write end	t_{DW}	6	–	6	–	9	–	10	–	ns	
Data hold time	t_{DH}	0	–	0	–	0	–	0	–	ns	4, 5
Write enable to output in High Z	t_{WZ}	–	5	–	5	–	5	–	5	ns	4, 5
Output active from write end	t_{OW}	3	–	3	–	3	–	3	–	ns	4, 5

Shaded areas contain advance information.



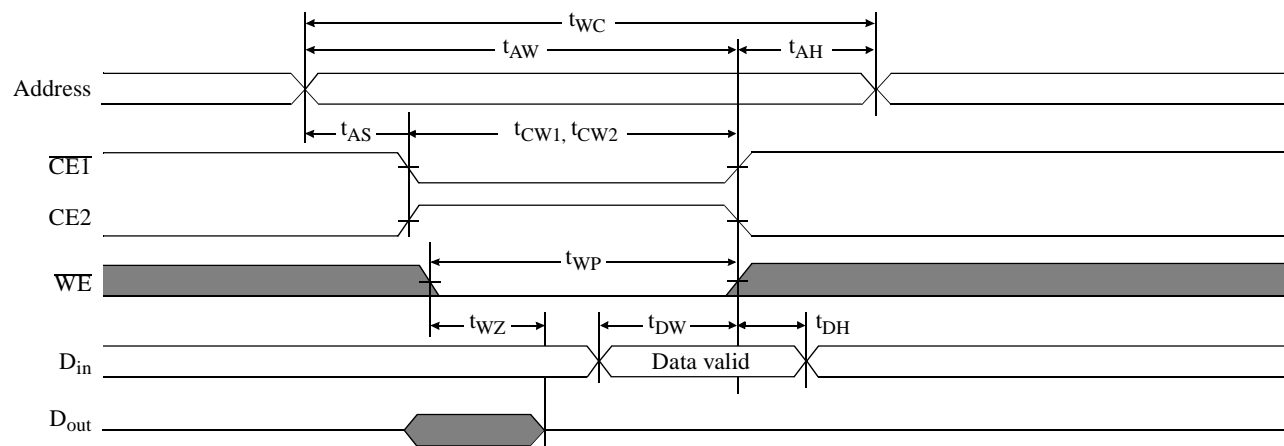
Write waveform 1 ^{10,11,12}

WE controlled



Write waveform 2 ^{10,11,12}

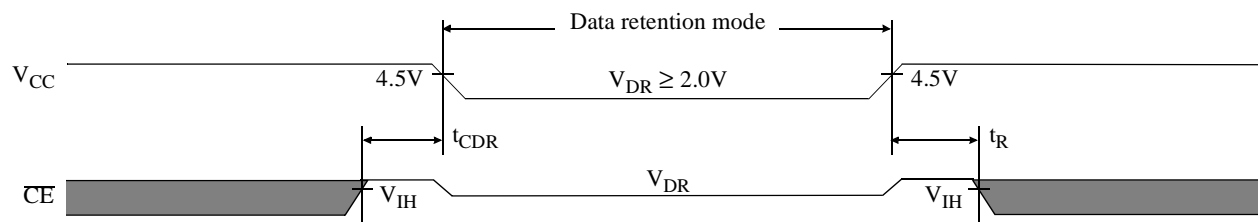
$\overline{\text{CE1}}$ and CE2 controlled



Data retention characteristics ¹⁴

Parameter	Symbol	Test conditions	Min	Max	Unit
V _{CC} for data retention	V _{DR}	V _{CC} = 2.0V	2.0	–	V
Data retention current	I _{CCDR}	$\overline{\text{CE1}} \geq V_{\text{CC}} - 0.2\text{V}$ or CE2 ≤ 0.2V	–	500	μA
Chip deselect to data retention time	t _{CDR}		0	–	ns
Operation recovery time	t _R	V _{in} ≥ V _{CC} - 0.2V or V _{in} ≤ 0.2V	t _{RC}	–	ns
Input leakage current	I _{LI}		–	1	μA

Data retention waveform





AC test conditions

- 5V output load: see Figure B, except as noted see Figure C.
- 3.3V output load: see Figure D, except as noted see Figure E.
- Input pulse level: GND to 3.0V. See Figure A.
- Input rise and fall times: 5 ns. See Figure A.
- Input and output timing reference levels: 1.5V.

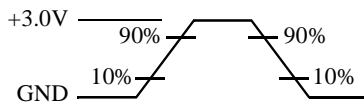


Figure A: Input waveform

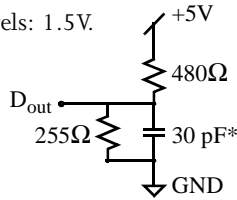
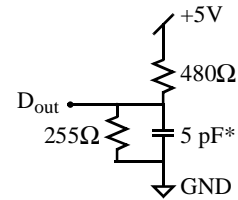
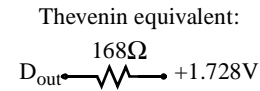


Figure B: Output load



*including scope and jig capacitance

Figure C: Output load for t_{CLZ} , t_{CHZ} , t_{OLZ} , t_{OHZ} , t_{OW}

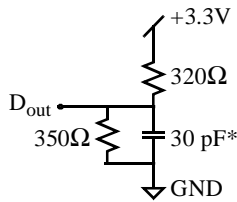
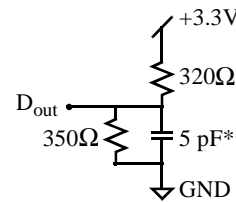


Figure D: Output load



*including scope and jig capacitance

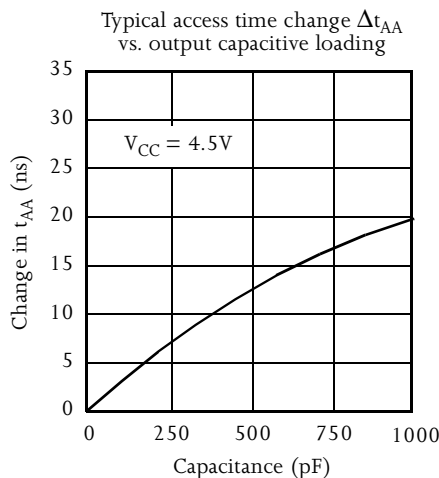
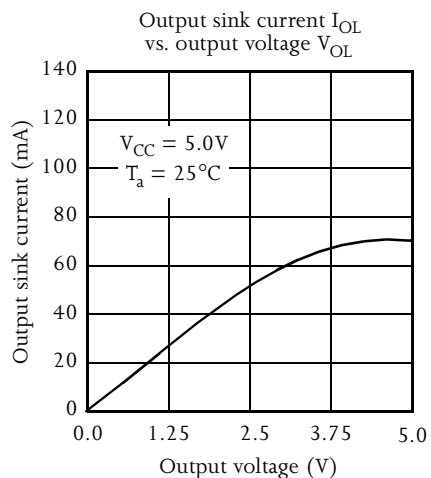
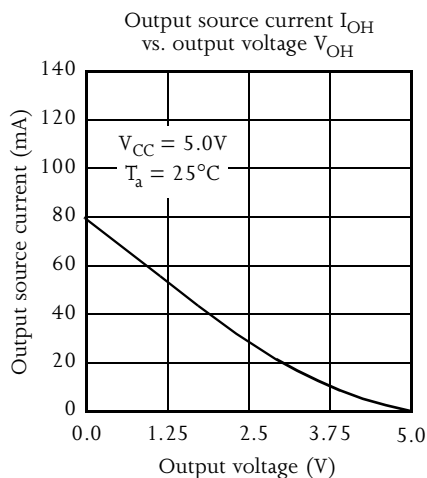
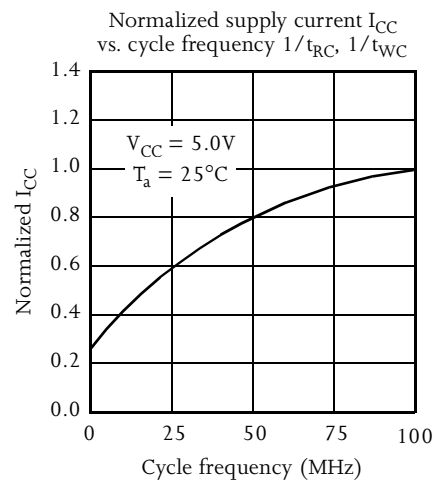
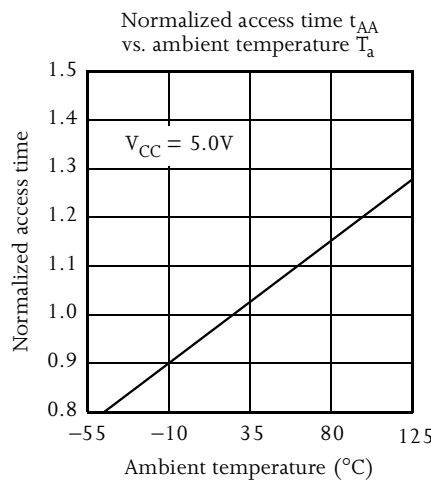
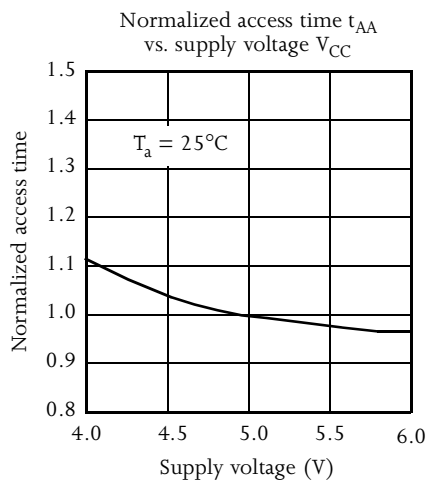
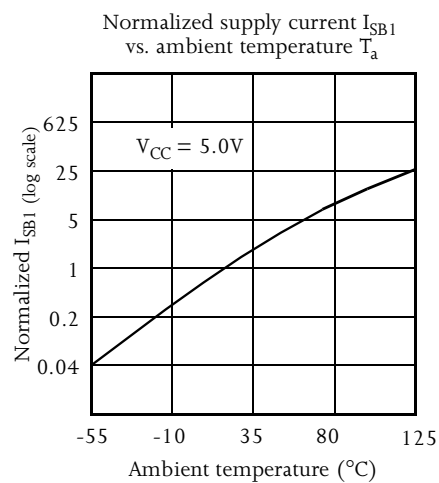
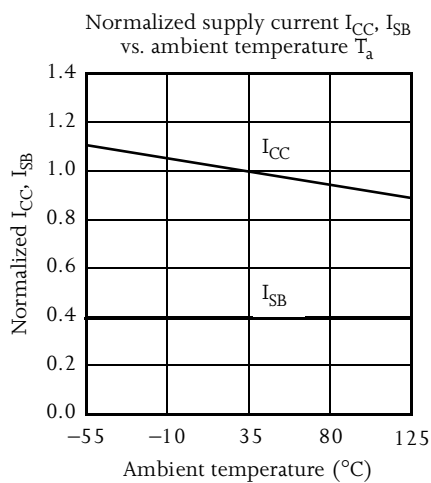
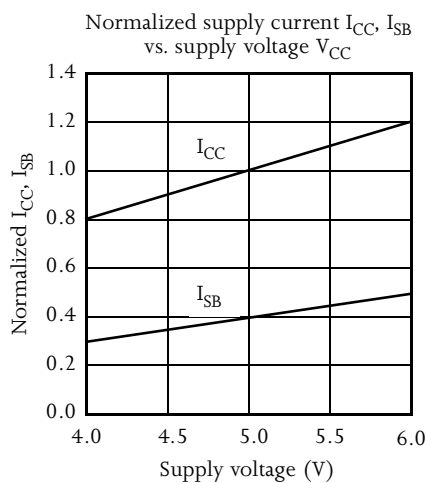
Figure C: Output load for t_{CLZ} , t_{CHZ} , t_{OLZ} , t_{OHZ} , t_{OW}

Notes

- 1 During V_{CC} power-up, a pull-up resistor to V_{CC} on \overline{CET} is required to meet I_{SB} specification.
- 2 This parameter is sampled and not 100% tested.
- 3 For test conditions, see AC Test Conditions, Figures A, B, C.
- 4 t_{CLZ} and t_{CHZ} are specified with $CL = 5pF$ as in Figure C. Transition is measured $\pm 500mV$ from steady-state voltage.
- 5 This parameter is guaranteed but not tested.
- 6 \overline{WE} is HIGH for read cycle.
- 7 \overline{CET} and \overline{OE} are LOW and CE2 is HIGH for read cycle.
- 8 Address valid prior to or coincident with \overline{CE} transition LOW.
- 9 All read cycle timings are referenced from the last valid address to the first transitioning address.
- 10 \overline{CET} or \overline{WE} must be HIGH or CE2 LOW during address transitions.
- 11 All write cycle timings are referenced from the last valid address to the first transitioning address.
- 12 \overline{CET} and CE2 have identical timing.
- 13 This data applicable to the AS7C1024. The AS7C31024 functions similarly.
- 14 2V data retention applies to commercial temperature operating range only.



Typical DC and AC characteristics





AS7C1024 ordering codes

Package \ Access time	10 ns	12 ns	15 ns	20 ns
Plastic DIP, 300 mil		AS7C1024-12TPC AS7C31024-12TPC	AS7C1024-15TPC AS7C31024-15TPC	AS7C1024-20TPC AS7C31024-20TPC
Plastic DIP, 400 mil		AS7C1024-12PC AS7C31024-12PC	AS7C1024-15PC AS7C31024-15PC	AS7C1024-20PC AS7C31024-20PC
Plastic SOJ, 300 mil	AS7C1024-10TJC	AS7C1024-12TJC AS7C31024-12TJC	AS7C1024-15TJC AS7C31024-15TJI	AS7C1024-20TJC AS7C31024-20TJI
Plastic SOJ, 400 mil	AS7C1024-10JC	AS7C1024-12JC AS7C31024-12JC	AS7C1024-15JC AS7C31024-15JI	AS7C1024-20JC AS7C31024-20JI
TSOP 8x20		AS7C1024-12TC AS7C31024-12TC	AS7C1024-15TC AS7C31024-15TC	AS7C1024-20TC AS7C31024-20TC

Shaded areas contain advance information.

AS7C1024 part numbering system

AS7C	X	1024	-XX	X	X	
SRAM prefix	Blank = 5V CMOS 3 = 3.3V CMOS	Device number	Access time	Package: TP = PDIP 300 mil TJ = SOJ 300 mil T = TSOP 8x20	P = PDIP 400 mil J = SOJ 400 mil	C = Commercial temperature range, 0°C to 70 °C I = Industrial temperature range, -40°C to 85°C



Representatives and sales offices

DOMESTIC REPS

ALABAMA

Concord Component Reps
Madison, AL
(205) 772-8883

ARIZONA

O'Donnell Associates Southwest
Phoenix, AZ
(602) 944-9542

ARKANSAS

Southern States Marketing
Richardson, TX
(214) 238-7500

CALIFORNIA

North:
Brooks Technical Group
(graphics)
Cupertino, CA
(408) 252-3880

Centaur North Inc. (memories)
San Jose, CA
(408) 894-0182

South:

Action Technical Sales
Cardiff, CA
(760) 634-1488

Competitive Technology
Irvine, CA
(714) 450-0170

COLORADO

Technology Sales
Denver, CO
(303) 692-8835

CONNECTICUT

Kitchen & Kutchin Associates
North Haven, CT
(203) 239-0212

DELAWARE

L.D. Lowery
Broomall, PA
(610) 356-5300

FLORIDA

Southern States Marketing
Palm Harbor, FL 34684
(813) 781-1706

Southern States Marketing
Maitland, FL 32751
(407) 667-4858

Southern States Marketing
Ft. Lauderdale, FL 33309
(954) 776-4330

GEORGIA

Concord Component Reps
Norcross, GA
(770) 416-9597

HAWAII

Brooks Technical Group
(graphics)
Cupertino, CA
(408) 252-3880

Centaur North Inc. (memories)
San Jose, CA
(408) 894-0182

IDAHO

ES/Chase
Tigard, OR
(503) 684-8500

ILLINOIS

El-Mech
Chicago, IL
(773) 794-9100

CentTech

Bridgeton, MO
(314) 291-4230

INDIANA

CC Electro Sales
Indianapolis, IN
(317) 921-5000

KANSAS

CenTech
Raytown, MO
(816) 358-8100

KENTUCKY

CC Electro Sales
Indianapolis, IN
(317) 921-5000

LOUISIANA

Southern States Marketing
Houston, TX
(713) 895-8533

Southern States Marketing
Richardson, TX
(214) 238-7500

MAINE

Kitchen & Kutchin Associates
Burlington, MA
(617) 229-2660

MARYLAND

Chesapeake Technology
Burtonsville, MD
(301) 236-0530

MASSACHUSETTS

Kitchen & Kutchin Associates
Burlington, MA
(617) 229-2660

MICHIGAN

Enco Group
Bloomfield Hills, MI
(810) 338-8600

MINNESOTA

D.A. Case Associates
Minneapolis, MN
(612) 831-6777

MISSOURI

CenTech
Bridgeton, MO
(314) 291-4230

CenTech
Raytown, MO
(816) 358-8100

MISSISSIPPI

Concord Component Reps
Madison, AL
(205) 772-8883

MONTANA

ES/Chase
Tigard, OR
(503) 684-8500

NEBRASKA

CenTech
Raytown, MO
(816) 358-8100

NEVADA

Brooks Technical Group
(graphics)
Cupertino, CA
(408) 252-3880

Centaur North Inc. (memories)
San Jose, CA
(408) 894-0182

NEW HAMPSHIRE

Kitchen & Kutchin Associates
Burlington, MA
(617) 229-2660

NEW JERSEY

ERA Associates
Commack, NY
(800) 645-5500

L.D. Lowery
Broomall, PA
(610) 356-5300

NEW YORK

ERA Associates
Commack, NY
(516) 543-0510

Tri-Tech Electronics
Binghamton, NY
(607) 722-3580

Tri-Tech Electronics
East Rochester, NY
(716) 385-6500

NORTH CAROLINA

Concord Component Reps
Raleigh, NC
(919) 846-3441

NORTH DAKOTA

D.A. Case Associates
Minneapolis, MN
(612) 831-6777

OHIO

Midwest Marketing Associates
Lyndhurst, OH
(216) 381-8575

Midwest Marketing Associates
Dayton, OH
(513) 433-2511

OKLAHOMA

Southern States Marketing
Richardson, TX
(214) 238-7500

OREGON

ES/Chase
Tigard, OR
(503) 684-8500

PENNSYLVANIA

L.D. Lowery
Broomall, PA
(610) 356-5300

Midwest Marketing Associates
Lyndhurst, OH
(216) 381-8575

RHODE ISLAND

Kitchen & Kutchin Associates
Burlington, MA
(617) 229-2660

SOUTH CAROLINA

Concord Component Reps
Raleigh, NC
(919) 846-3441

SOUTH DAKOTA

D.A. Case Associates
Minneapolis, MN
(612) 831-6777

TENNESSEE

Concord Component Reps
Madison, AL
(205) 772-8883

TEXAS

O'Donnell Associates Southwest
El Paso, TX
(915) 778-2581

Southern States Marketing
Austin, TX
(512) 835-5822

Southern States Marketing
Houston, TX
(713) 895-8533

Southern States Marketing
Richardson, TX
(214) 238-7500

UTAH

Charles Fields & Associates
Bountiful, UT
(801) 299-8228

VERMONT

Kitchen & Kutchin Associates
Burlington, MA
(617) 229-2660

VIRGINIA

Chesapeake Technology
Burtonsville, MD
(301) 236-0530

WASHINGTON

ES/Chase
Kirkland, WA
(206) 823-9535

WEST VIRGINIA

Chesapeake Technology
Burtonsville, MD
(301) 236-0530

WISCONSIN

D.A. Case Associates
Minneapolis, MN
(612) 831-6777

WYOMING

Technology Sales
Denver, CO
(303) 692-8835

INTERNATIONAL REPS

AUSTRALIA

ACD
Bayswater, Victoria
+61-3-9762-7644

R&D Electronics
Dingley, Victoria
+61-3-9558-0444

CANADA

Neutronics
Kanata, Ontario
(613) 599-1263

EUROPE

Britcomp Sales Ltd.
Weybridge, Surrey, England
+44-1932 347077
+44-1932 346256

Munich, Germany
+49-894488496
+33-1-69387678

Athismons, France
DataTech
Germaring, Germany
+49-89-89470030

interACTIVE
Ripley, Derbyshire, England
+44-1332-668665

Ramtec Int'l B.V.
Holland, Spain, Italy
Belgium, Hungary, Russia
+31-2526-21222

HONG KONG

Eastele Technology, Ltd.
Kowloon Bay
+852-2798-8860

Excelpoint
+852-25032212

INDIA

Priya Electronics
San Jose, CA USA
(408) 954-1866

Satcom Sales and Services
Hyderabad
+91-40-761-4675

ISRAEL

Eldis Technologies
Herzlia
+9729-9-562-666

JAPAN

Bussan Micro Electronics Corp.
Shinagawa-ku, Tokyo
+81-3-5421-1730

Rohm Corporation
Kyoto
+81-75-315-4152

KOREA

FM Korea
Seoul
+82-596-3880
fm@kmet.co.kr

Woo Young Tech Co., Ltd.
Seoul
+822-369-7099

MALAYSIA

Excelpoint
+60-4-6413218

Excerte Pte Ltd.
Gelugor, Penang
+60-4-657-9592

SINGAPORE

Excelpoint
+65-741-8966

Excerte Pte Ltd.
+65-749-1349

TAIWAN

ASTL
Taipei, Taiwan R.O.C.
+886-2-521-2363

Golden Way
Taipei-Hsien Taiwan R.O.C.
+886-2-698-1868 x505

Puteam International
Taipei, Taiwan R.O.C.
+886-2-729-0373

SALES OFFICES

HEADQUARTERS

Alliance Semiconductor
San Jose, CA
Tel: (408) 383-4900
Fax: (408) 383-4999
BBS: (408) 383-4994

EAST

Boston, MA
(617) 239-8127

CENTRAL

Dallas, TX
(972) 516-4286

EUROPE

United Kingdom
44-1332606035

TECHNICAL CENTER

TAIWAN

Alliance Semiconductor
Taipei, Taiwan R.O.C.
Tel: +886-2-516-7995
Fax: +886-2-517-4928
alliance@netra.wow.net.tw

Alliance Semiconductor reserves the right to make changes in this data sheet at any time to improve design and supply the best product possible. Publication of advance information does not constitute a commitment to produce or supply the product described. The company cannot assume responsibility for circuits shown or represent that they are free from patent infringement. Alliance products are not authorized for use as critical components in life support devices or systems without the express written approval of the president of Alliance. ProMotion® and the Alliance logo are registered trademarks of Alliance Semiconductor Corporation. All other trademarks are property of their respective holders.

ALLIANCE SEMICONDUCTOR

3099 North First Street San Jose, CA 95134 Tel (408) 383-4900 Fax (408) 383-4999 BBS: (408) 383-4994 www.alsc.com

Printed in U.S.A.

Copyright © 1997 All rights reserved.

May 1997