

# CLC200

*CLC200 Fast Settling, Wideband*



Literature Number: SNOS845

# Comlinear CLC200 Fast Settling, Wideband Operational Amplifiers

## General Description

The CLC200 operational amplifier achieves performance far superior to that of other high performance op amps. A proprietary Comlinear design provides a **bandwidth of DC-95MHz and an unprecedented settling time of 18nsec to 0.1%**. And since thermal tail has been eliminated, the CLC200 can be depended upon to settle fast and solidly maintain its level. Drive capability is also impressive at 24V<sub>pp</sub> and 100mA.

Using the CLC200 is as easy as adding power supplies and a gain-setting resistor. The result is reliable, consistent performance because such characteristics as bandwidth and settling time are virtually independent of gain setting. Unlike conventional op amp designs where the optimum gain-bandwidth product occurs at a high gain, minimum settling time at a gain of -1, maximum slew rate at a gain of +1, et cetera, the CLC200 offers predictable response at gain settings from ±1 to ±50. This, coupled with consistent performance from unit to unit with **no external compensation**, makes the CLC200 a real time and cost-saver in design and production situations alike.

Minimizing settling time was a design goal of the CLC200. Settling time is one of the most demanding of all op amp requirements since it is affected by the op amp's bandwidth, gain flatness, and harmonic distortion. The result of this effort is an amplifier fast enough for the most demanding high speed D to A converters and "flash" A to D converters.

The superior slew rate and rise and fall times of the CLC200 make it an ideal amplifier for a broad range of pulse, analog, and digital applications. Flat gain and phase response from DC to beyond 50MHz ensure distortion levels well below those of other op amps. **A full power bandwidth of 20MHz** eliminates the need for power buffers in many applications.

The CLC200 is constructed using thin film resistor/bipolar transistor technology, and is available in the following versions:

CLC200AI	-25°C to +85°C	12-pin TO-8 can
CLC200A8C	-55°C to +125°C	12-pin TO-8 can, MIL-STD-883, Level B
CLC200AK	-55°C to +125°C	12-pin TO-8 can, features burn-in and hermetic testing
CLC200AM	-55°C to +125°C	12-pin TO-8 can, screened to Comlinear's M std. for high reliability

DESC SMD number: 5962-89910

## Typical Performance

parameter	gain setting						units
	+2	+20	+50	-2	-20	-50	
-3dB bandwidth	150	95	75	100	95	90	MHz
rise time (20V)	—	4	5	4	4	4	ns
slew rate	4	4	4	4	4	4	V/ns
settling time (0.1%)	—	18	23	18	18	23	ns

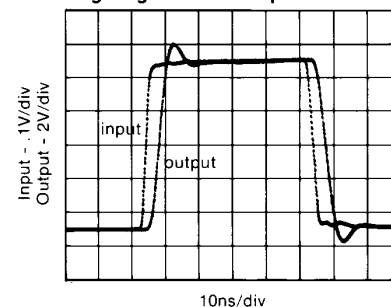
## Features

- -3dB bandwidth of 95MHz
- 0.1% settling in 18ns
- 4000V/μs slew rate
- Low distortion, linear phase
- 3.6ns rise and fall times

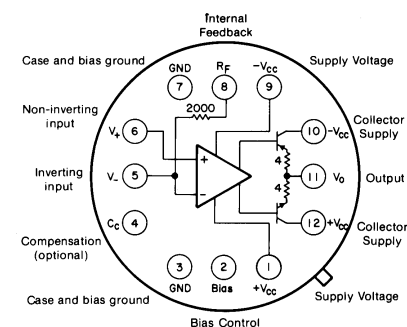
## Applications

- Fast, precision A to D, D to A conversion
- Baseband and video communications
- Radar, sonar, IF processors
- Laser drivers, photodiode preamps
- High-density buffering
- Graphic CRT composite video drive amp

Large Signal Pulse Response

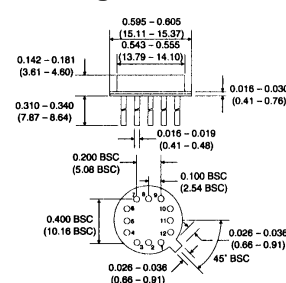


Bottom View



Pin 8 provides access to a 2000 ohm feedback resistor. Pin 2 allows the user to reduce the amplifier supply current or to turn the amplifier off completely.

## Package Dimensions



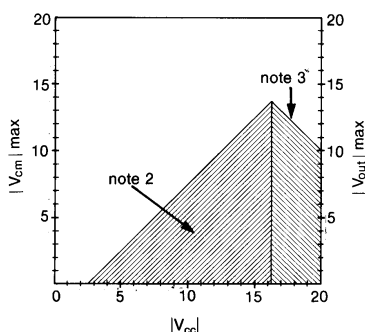
# CLC200 Electrical Characteristics ( $A_v = +20, V_{cc} = \pm 5V, R_L = 200\Omega, R_f = 2000\Omega$ ; unless specified)

PARAMETERS	CONDITIONS	TYP	MAX & MIN RATINGS <sup>1</sup>			UNITS	SYMBOL
Ambient Temperature	CLC200A1 <sup>1</sup>	+25°C	-25°C	+25°C	+85°C		
Ambient Temperature	CLC200A8 <sup>1</sup>	+25°C	-55°C	+25°C	+125°C		
<b>FREQUENCY DOMAIN RESPONSE</b>							
* -3dB bandwidth	$V_{out} < 2V_{pp}$	95	> 85	> 85	> 80	MHz	SSBW
gain flatness at	$V_{out} < 2V_{pp}$						
* peaking	0.1 to 25MHz	0	< 0.4	< 0.3	< 0.4	dB	GFPL
* peaking	>25MHz	0.2	< 0.8	< 0.6	< 1.0	dB	GFPH
* rolloff	at 50MHz	—	< 0.6	< 0.4	< 0.6	dB	GFR
group delay	to 50MHz	4.2 ± 0.5	—	—	—	ns	GD
linear phase deviation	to 50MHz	1	< 2	< 2	< 2	°	LPD
reverse isolation	to 50MHz						
non-inverting		60	> 50	> 50	> 50	dB	RINI
inverting		45	> 35	> 35	> 35	dB	RIIN
<b>TIME DOMAIN RESPONSE</b>							
rise and fall time	2V step	3.6	< 4.1	< 4.1	< 4.4	ns	TRS
	20V step	4	< 5	< 5	< 6	ns	TRL
settling time to .02%	10V step <sup>4</sup>	25	—	—	—	ns	TSP
to .1%	10V step <sup>4</sup>	18	< 25	< 25	< 25	ns	TS
overshoot	10V step	5	< 12	< 10	< 10	%	OS
slew rate (overdriven input)		4	> 3	> 3	> 3	V/ns	SR
overload recovery							
<50ns pulse, 200% overdrive		25	—	—	—	ns	OR
<b>DISTORTION AND NOISE RESPONSE</b>							
*2nd harmonic distortion	2V <sub>pp</sub> , 20MHz	-52	< -45	< -45	< -45	dBc	HD2
*3rd harmonic distortion	2V <sub>pp</sub> , 20MHz	-58	< -50	< -50	< -50	dBc	HD3
equivalent noise input							
noise floor	>100kHz	-156	< -150	< -150	< -150	dBm(1Hz)	SNF
integrated noise	1kHz to 100MHz	35	< 70	< 70	< 70	μV	INV
noise floor	>5MHz	-156	< -150	< -150	< -150	dBm(1Hz)	SNF
integrated noise	5MHz to 100MHz	35	< 70	< 70	< 70	μV	INV
<b>STATIC DC PERFORMANCE</b>							
*input offset voltage		10	< 25	< 25	< 25	mV	VIO
average temperature coefficient <sup>1</sup>		35	< 120	< 120	< 120	μV/°C	DVIO
*input bias current	non-inverting	10	< 40	< 30	< 40	μA	IBN
average temperature coefficient <sup>1</sup>		20	< 125	< 125	< 125	nA/°C	DIBN
*input bias current	inverting	20	< 70	< 50	< 70	μA	IBI
average temperature coefficient <sup>1</sup>		70	< 250	< 250	< 250	nA/°C	DIBI
*power supply rejection ratio		55	> 45	> 45	> 45	dB	PSRR
common mode rejection ratio		46	> 40	> 40	> 40	dB	CMRR
*supply current	no load	29	< 36	< 34	< 36	mA	ICC
<b>MISCELLANEOUS PERFORMANCE</b>							
non-inverting input	resistance	250	> 100	> 100	> 100	kΩ	RIN
	capacitance	2.4	< 3	< 3	< 3	pF	CIN
output impedance	at DC	—	< 0.1	< 0.1	< 0.1	Ω	RO
	at 50MHz	1, 35	—	—	—	Ω, nH	ZO
output voltage range	no load	±12	> ±11	> ±11	> ±11	V	VO
internal feedback resistor	absolute tolerance	< 0.4	—	—	—	%	RFA

Min/max ratings are based on product characterization and simulation. Individual parameters are tested as noted. Outgoing quality levels are determined from tested parameters.

## Absolute Maximum Ratings

Common Mode and Output Voltage Limits



supply voltage ( $V_{cc}$ )	±20V
output current	±100mA
thermal resistance ( $\theta_{ca}$ )	see thermal model
junction temperature	+175°C
operating temperature	Al: -25°C to +85°C A8: -55°C to +125°C
storage temperature	-65°C to +150°C
lead temperature (soldering 10s)	+300°C

**note 1:** Parameters preceded by an \* are the final electrical test parameters and are 100% tested. A8 units are tested at -55°C, +25°C, and +125°C. Al units are tested only at +25°C although performance at -25°C and +85°C is guaranteed to be better than or equal to the performance specified for A8 devices in the -55°C and +125°C ranges. Maximum temperature coefficient parameters apply only to A8 devices.

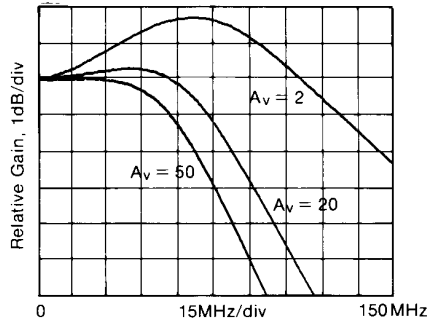
**note 2:** This rating protects against damage to the input stage caused by saturation of either the input or output stages. Under transient conditions not exceeding 1μs (duty cycle not exceeding 10%), maximum input voltage may be as large as twice the maximum.  $V_{cm}$  should never exceed  $V_{cc}$ . ( $V_{cm}$  is the voltage at the non-inverting input, pin 6.)

**note 3:** This rating protects against exceeding transistor collector-emitter breakdown ratings. Recommended  $V_{cc}$  is ±15V.

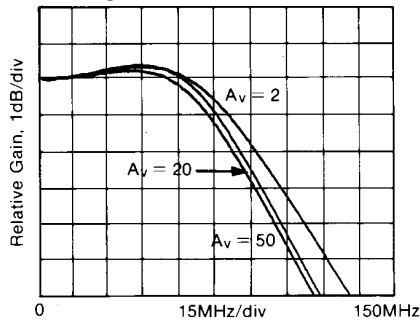
**note 4:** Settling time specifications require the use of an external feedback resistor (2000Ω).

# CLC200 Typical Performance Characteristics $(T_A = +25^\circ, A_V = +20, V_{CC} = \pm 5V, R_L = 200\Omega; \text{ unless specified})$

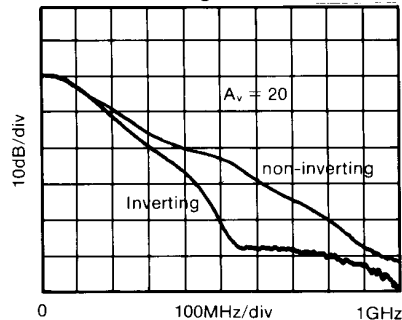
**Non-Inverting Gain**



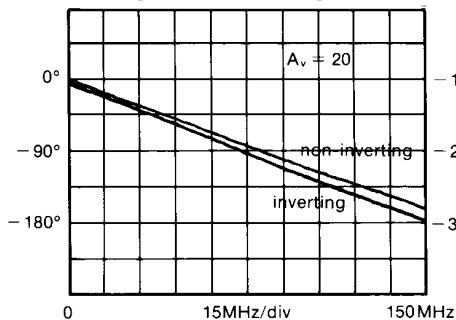
**Inverting Gain**



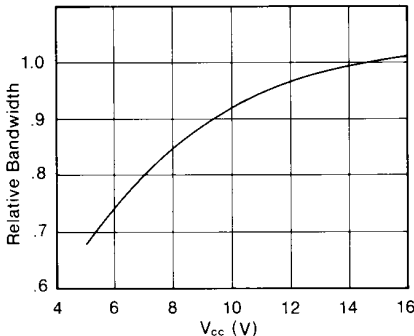
**Broadband Inverting and Non-Inverting Gain**



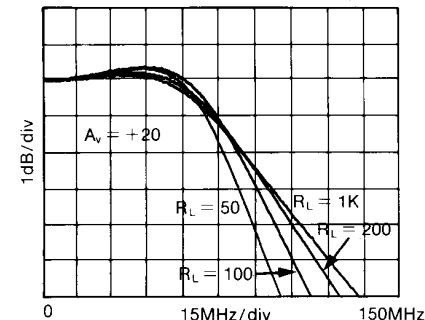
**Inverting and Non-Inverting Phase**



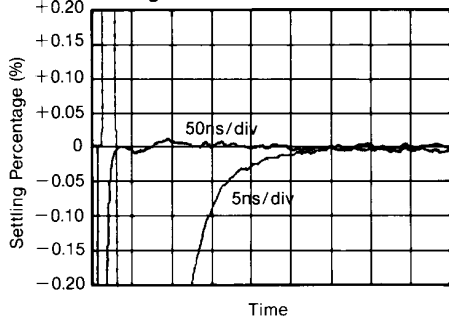
**Relative Bandwidth vs. Vcc**



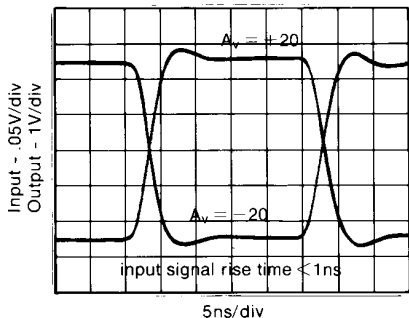
**Gain vs. Frequency for Various RLs**



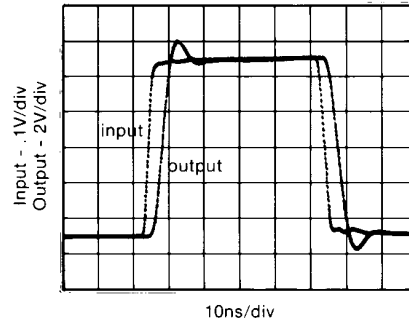
**Settling Time**



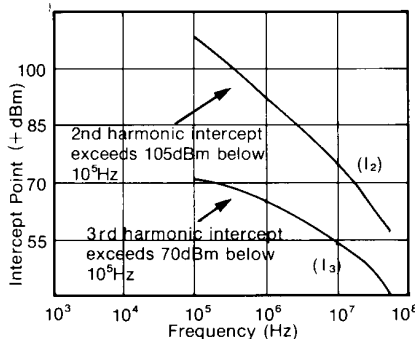
**Small Signal Pulse Response (Inv, Non-Inv)**



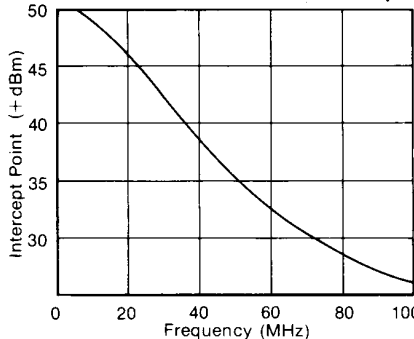
**Large Signal Pulse Response**



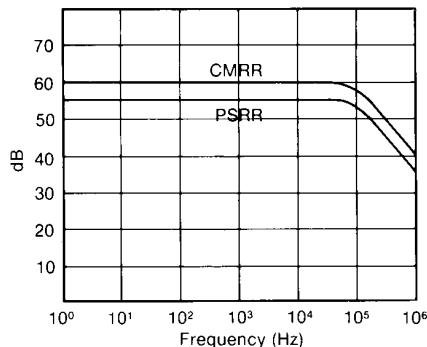
**2nd and 3rd Harmonic Distortion Intercept**



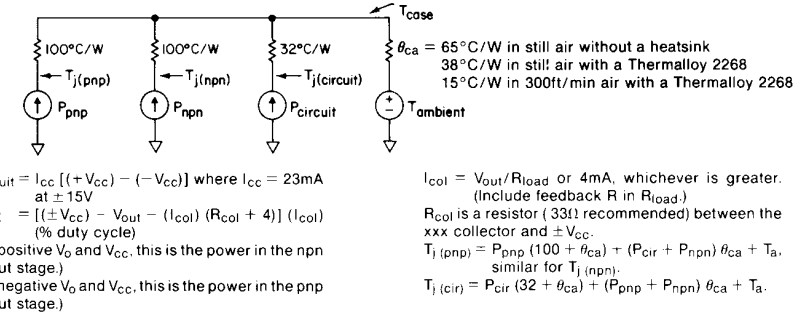
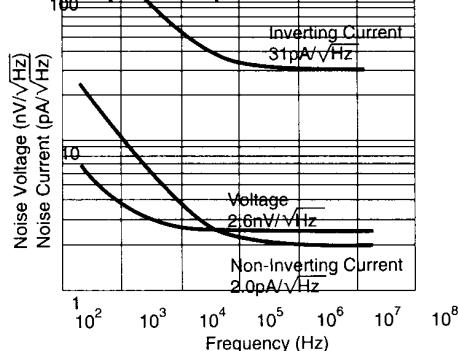
**2-Tone 3rd Order Intermod. Intercept**



**CMRR and PSRR**



**Equivalent Input Noise**



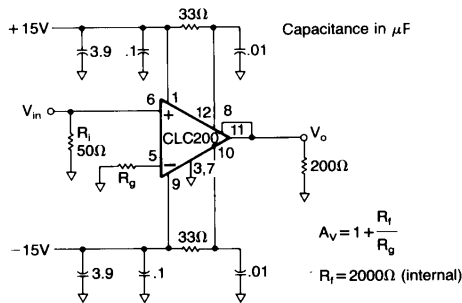


Figure 1: suggested non-inverting gain circuit

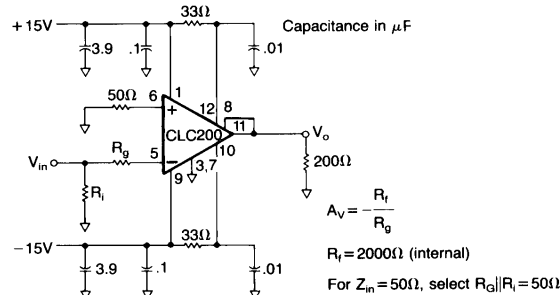


Figure 2: suggested inverting gain circuit

Test fixture schematics are available upon request.

### Controlling Bandwidth and Passband Response

As with any op amp, the ratio of the two feedback resistors  $R_f$  and  $R_g$  determines the gain of the CLC200. Unlike conventional op amps, however, the closed loop pole-zero response of the CLC200 is affected very little by the value of  $R_g$ .  $R_g$  scales the magnitude of the gain, but does not change the value of the feedback. This is possible due to a proprietary circuit topology.  $R_f$  does influence the feedback and so the CLC200 has been internally compensated for optimum performance with  $R_f = 2000\Omega$ , but any value of  $R_f > 1k\Omega$  may be used with a single capacitor placed between pins 4 and 5 for compensation. See Table 1. As  $R_f$  decreases,  $C_c$  must increase to maintain flat gain. Slew rate will decrease slightly with increasing  $C_c$ , but other parameters such as bandwidth, settling time, and phase linearity will improve. Large values of  $R_f$  and  $C_c$  can be used together or separately to reduce the bandwidth. This may be desirable for reducing the bandwidth in applications not requiring the full frequency response available although this may cause the output noise to increase at low gains.

Table 1: Bandwidth versus  $R_f$  and  $C_c$

$R_f$ (k $\Omega$ )	$C_c$ (pF)	$f_{\pm 0.3dB}$ (MHz)	$f_{-3.0dB}$ (MHz)
10.0	0	5	15
5.0	0	10	30
3.0	0	20	60
2.0	0	50	100
1.5	0.25	70	130
1.0	0.50	120	170

### Layout Considerations

To assure optimum performance the user should follow good layout practices which minimize the unwanted coupling of signals between nodes. During initial breadboarding of the circuit, use direct point to point wiring, keeping the lead lengths to less than .25". The use of solid, unbroken ground plane is helpful. Avoid wire-wrap type pc boards and methods. Sockets with small, short pin receptacles may be used with minimal performance degradation although their use is not recommended.

During pc board layout, keep all traces short and direct. The resistive body of  $R_g$  should be as close as possible to pin 5 to minimize capacitance at that point. For the same reason, remove ground plane from the vicinity of pins 5 and 6. In other areas, use as much ground plane as possible on one side of the board. It is especially important to provide a ground return path for current from the load resistor to the power supply bypass capacitors. Ceramic capacitors of .01 to .1 $\mu$ F (with short leads) should be less than .15 inches from pins 1 and 9. Larger tantalum capacitors should be placed within one inch of these pins.  $V_{cc}$  connections to pins 10 and 12 can be made directly from pins 9 and 1, but better supply rejection and settling time are obtained if they are separately bypassed as in Figures 1 and 2. To prevent signal distortion caused by reflections from impedance mismatches, use terminated microstrip or coaxial cable when the signal must traverse more than a few inches.

Since the pc board forms such an important part of the circuit, much time can be saved if prototype boards of any high frequency sections are built and tested early in the design phase. Evaluation boards designed for either inverting or non-inverting gains are available from Comlinear at minimal cost.

### Distortion and Amplification Fidelity

The graphs of intercept point versus frequency on the preceding page make it easy to predict the distortion at any frequency, given the

output voltage of the CLC200. First, convert the output voltage ( $V_o$ ) to  $V_{RMS} = (V_{pp}/2\sqrt{2})$  and then to  $P = (10\log_{10}(20V_{RMS}^2))$  to get output power in dBm. At the frequency of interest, its 2nd harmonic will be  $S_2 = (I_2 - P)$ dB below the level of P. Its third harmonic will be  $S_3 = 2(I_3 - P)$ dB below P, as will the two-tone third order intermodulation products. These approximations are useful for  $P < -1$ dB compression levels.

Approximate noise figure can be determined for the CLC200 using the Equivalent Input Noise graph on the preceding page. The following equation can be used to determine noise figure (F) in dB.

$$F = 10\log \left[ 1 + \frac{i_n^2 R_f^2}{v_n^2 + A_v^2} \right]$$

where  $v_n$  is the rms noise voltage and  $i_n$  is the rms noise current at the inverting node. Beyond the breakpoint of the curves (i.e., where they are flat), broadband noise figure equals spot noise figure, so  $\Delta f$  should equal one (1) and  $v_n$  and  $i_n$  should be read directly off the graph. Below the breakpoint, the noise must be integrated and  $\Delta f$  set to the appropriate bandwidth.

For linear operation of the CLC200 at large output voltage swings (DC component not included) and at high frequencies, observe the (AC output voltage)  $\times$  (frequency) product specification of  $400V \cdot MHz$ . Exceeding this rating will cause the signal to be greatly distorted as the amplifier bias control circuit reduces the current available for slewing to prevent damage. At frequencies and voltages within this range the excess slew rate and bandwidth available will ensure the highest possible degree of amplified signal fidelity.

### Operation with Reduced Bias Current

Placing a resistor between pins 1 and 2 will cause the CLC200 bias current to be reduced. A value of 20K will cause only a slight reduction, 3K will almost halve the current, while less than 1K will reduce bias to about 5mA and the amplifier will be off. In this condition, the input signal will be greatly attenuated. In the reduced bias, on condition, bandwidth will be roughly proportional to the reduction in bias current. A mechanical or semiconductor switch can be used to turn the amplifier off. Any connection which would cause current to flow out of pin 2 will result in increased bias current and may lead to device destruction from overheating and excessive current.

### Thermal Considerations

At high ambient temperatures or large internal power dissipations, heat sinking is required to maintain acceptable junction temperatures. Use the thermal model on the previous page to determine junction temperatures. Many styles of heat sinks are available for TO-8 packages; the Thermalloy 2240 and 2268 are good examples. Some heat sinks are the radial fin type which cover the pc board and may interfere with external components. An excellent solution to this problem is to use surface mounted resistors and capacitors. They have a very low profile and actually improve high frequency performance. For use of these heat sinks with conventional components, a .1" high spacer can be inserted under the TO-8 package to allow sufficient clearance.

### Application Notes and Assistance

Application notes that address topics such as data conversion, fiber optics, and general high frequency circuit design are available from Comlinear or your Comlinear sales engineer.

Comlinear maintains a staff of highly qualified applications engineers to provide technical and design assistance.

**This page intentionally left blank.**

---

### Customer Design Applications Support

National Semiconductor is committed to design excellence. For sales, literature and technical support, call the National Semiconductor Customer Response Group at **1-800-272-9959** or fax **1-800-737-7018**.

### Life Support Policy

National's products are not authorized for use as critical components in life support devices or systems without the express written approval of the president of National Semiconductor Corporation. As used herein:

1. Life support devices or systems are devices or systems which, a) are intended for surgical implant into the body, or b) support or sustain life, and whose failure to perform, when properly used in accordance with instructions for use provided in the labeling, can be reasonably expected to result in a significant injury to the user.
2. A critical component is any component of a life support device or system whose failure to perform can be reasonably expected to cause the failure of the life support device or system, or to affect its safety or effectiveness.



#### National Semiconductor Corporation

1111 West Bardin Road  
Arlington, TX 76017  
Tel: 1(800) 272-9959  
Fax: 1(800) 737-7018

#### National Semiconductor Europe

Fax: (+49) 0-180-530 85 86  
E-mail: europe.support.nsc.com  
Deutsch Tel: (+49) 0-180-530 85 85  
English Tel: (+49) 0-180-532 78 32  
Francais Tel: (+49) 0-180-532 93 58  
Italiano Tel: (+49) 0-180-534 16 80

#### National Semiconductor Hong Kong Ltd.

13th Floor, Straight Block  
Ocean Centre, 5 Canton Road  
Tsimshatsui, Kowloon  
Hong Kong  
Tel: (852) 2737-1600  
Fax: (852) 2736-9960

#### National Semiconductor Japan Ltd.

Tel: 81-043-299-2309  
Fax: 81-043-299-2408

---

National does not assume any responsibility for use of any circuitry described, no circuit patent licenses are implied and National reserves the right at any time without notice to change said circuitry and specifications.

## IMPORTANT NOTICE

Texas Instruments Incorporated and its subsidiaries (TI) reserve the right to make corrections, modifications, enhancements, improvements, and other changes to its products and services at any time and to discontinue any product or service without notice. Customers should obtain the latest relevant information before placing orders and should verify that such information is current and complete. All products are sold subject to TI's terms and conditions of sale supplied at the time of order acknowledgment.

TI warrants performance of its hardware products to the specifications applicable at the time of sale in accordance with TI's standard warranty. Testing and other quality control techniques are used to the extent TI deems necessary to support this warranty. Except where mandated by government requirements, testing of all parameters of each product is not necessarily performed.

TI assumes no liability for applications assistance or customer product design. Customers are responsible for their products and applications using TI components. To minimize the risks associated with customer products and applications, customers should provide adequate design and operating safeguards.

TI does not warrant or represent that any license, either express or implied, is granted under any TI patent right, copyright, mask work right, or other TI intellectual property right relating to any combination, machine, or process in which TI products or services are used. Information published by TI regarding third-party products or services does not constitute a license from TI to use such products or services or a warranty or endorsement thereof. Use of such information may require a license from a third party under the patents or other intellectual property of the third party, or a license from TI under the patents or other intellectual property of TI.

Reproduction of TI information in TI data books or data sheets is permissible only if reproduction is without alteration and is accompanied by all associated warranties, conditions, limitations, and notices. Reproduction of this information with alteration is an unfair and deceptive business practice. TI is not responsible or liable for such altered documentation. Information of third parties may be subject to additional restrictions.

Resale of TI products or services with statements different from or beyond the parameters stated by TI for that product or service voids all express and any implied warranties for the associated TI product or service and is an unfair and deceptive business practice. TI is not responsible or liable for any such statements.

TI products are not authorized for use in safety-critical applications (such as life support) where a failure of the TI product would reasonably be expected to cause severe personal injury or death, unless officers of the parties have executed an agreement specifically governing such use. Buyers represent that they have all necessary expertise in the safety and regulatory ramifications of their applications, and acknowledge and agree that they are solely responsible for all legal, regulatory and safety-related requirements concerning their products and any use of TI products in such safety-critical applications, notwithstanding any applications-related information or support that may be provided by TI. Further, Buyers must fully indemnify TI and its representatives against any damages arising out of the use of TI products in such safety-critical applications.

TI products are neither designed nor intended for use in military/aerospace applications or environments unless the TI products are specifically designated by TI as military-grade or "enhanced plastic." Only products designated by TI as military-grade meet military specifications. Buyers acknowledge and agree that any such use of TI products which TI has not designated as military-grade is solely at the Buyer's risk, and that they are solely responsible for compliance with all legal and regulatory requirements in connection with such use.

TI products are neither designed nor intended for use in automotive applications or environments unless the specific TI products are designated by TI as compliant with ISO/TS 16949 requirements. Buyers acknowledge and agree that, if they use any non-designated products in automotive applications, TI will not be responsible for any failure to meet such requirements.

Following are URLs where you can obtain information on other Texas Instruments products and application solutions:

### Products

Audio	<a href="http://www.ti.com/audio">www.ti.com/audio</a>
Amplifiers	<a href="http://amplifier.ti.com">amplifier.ti.com</a>
Data Converters	<a href="http://dataconverter.ti.com">dataconverter.ti.com</a>
DLP® Products	<a href="http://www.dlp.com">www.dlp.com</a>
DSP	<a href="http://dsp.ti.com">dsp.ti.com</a>
Clocks and Timers	<a href="http://www.ti.com/clocks">www.ti.com/clocks</a>
Interface	<a href="http://interface.ti.com">interface.ti.com</a>
Logic	<a href="http://logic.ti.com">logic.ti.com</a>
Power Mgmt	<a href="http://power.ti.com">power.ti.com</a>
Microcontrollers	<a href="http://microcontroller.ti.com">microcontroller.ti.com</a>
RFID	<a href="http://www.ti-rfid.com">www.ti-rfid.com</a>
OMAP Mobile Processors	<a href="http://www.ti.com/omap">www.ti.com/omap</a>
Wireless Connectivity	<a href="http://www.ti.com/wirelessconnectivity">www.ti.com/wirelessconnectivity</a>

### Applications

Communications and Telecom	<a href="http://www.ti.com/communications">www.ti.com/communications</a>
Computers and Peripherals	<a href="http://www.ti.com/computers">www.ti.com/computers</a>
Consumer Electronics	<a href="http://www.ti.com/consumer-apps">www.ti.com/consumer-apps</a>
Energy and Lighting	<a href="http://www.ti.com/energy">www.ti.com/energy</a>
Industrial	<a href="http://www.ti.com/industrial">www.ti.com/industrial</a>
Medical	<a href="http://www.ti.com/medical">www.ti.com/medical</a>
Security	<a href="http://www.ti.com/security">www.ti.com/security</a>
Space, Avionics and Defense	<a href="http://www.ti.com/space-avionics-defense">www.ti.com/space-avionics-defense</a>
Transportation and Automotive	<a href="http://www.ti.com/automotive">www.ti.com/automotive</a>
Video and Imaging	<a href="http://www.ti.com/video">www.ti.com/video</a>

TI E2E Community Home Page

[e2e.ti.com](http://e2e.ti.com)

Mailing Address: Texas Instruments, Post Office Box 655303, Dallas, Texas 75265  
Copyright © 2011, Texas Instruments Incorporated