

# PT3300 Series

## 30 WATT POSITIVE STEP-DOWN INTEGRATED SWITCHING REGULATOR

Revised 5/15/98



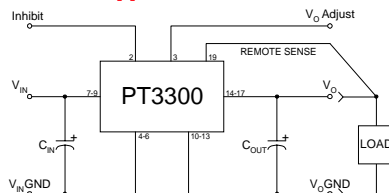
The PT3300 is a new series of high-input voltage, 30 Watt, non-isolated Integrated Switching Regulators (ISRs) housed in a 19-pin SIP package. The 20 to 60 V input range allows easy integration into many distributed power applications which utilize 24, 28, or 48V bus architectures.

The PT3300 series is available with 3.3, 5, 12, or 15V outputs. The output voltage is adjustable from 90 to 110% of

nominal with the addition of an external resistor. Other easy to use features include an inhibit function and remote sense which automatically compensates for any voltage drop from the ISR to the load. As with other Power Trends' products, the PT3300 includes built in current limit, short circuit protection and over-temperature shutdown.

The PT3300 requires a 330µF output capacitor for proper operation.

### Standard Application



$C_{in}$  = Optional 100µF/100V electrolytic  
 $C_{out}$  = Required 330µF electrolytic

Note: Pins 4,5,6 and pins 10,11,12,13 are connected internally.

### Pin-Out Information

| Pin | Function     |
|-----|--------------|
| 1   | Do Not Use   |
| 2   | Inhibit      |
| 3   | $V_o$ Adjust |
| 4   | $V_{in}$ GND |
| 5   | $V_{in}$ GND |
| 6   | $V_{in}$ GND |
| 7   | $V_{in}$     |
| 8   | $V_{in}$     |
| 9   | $V_{in}$     |
| 10  | $V_o$ GND    |
| 11  | $V_o$ GND    |
| 12  | $V_o$ GND    |
| 13  | $V_o$ GND    |
| 14  | $V_o$        |
| 15  | $V_o$        |
| 16  | $V_o$        |
| 17  | $V_o$        |
| 18  | Do Not Use   |
| 19  | Remote Sense |

### Ordering Information

|         |               |
|---------|---------------|
| PT3301□ | = +3.3 Volts  |
| PT3302□ | = +5.0 Volts  |
| PT3303□ | = +12.0 Volts |
| PT3304□ | = +15.0 Volts |

### PT Series Suffix (PT1234X)

| Case/Pin Configuration   |          |
|--------------------------|----------|
| Vertical Through-Hole    | <b>N</b> |
| Horizontal Through-Hole  | <b>A</b> |
| Horizontal Surface Mount | <b>C</b> |

(For dimensions and PC board layout, see Package Styles 820 and 830.)

### Features

- 30W Output Power
- Input Voltage Range: 20V to 60V
- High Efficiency
- $V_o$  Inhibit
- $V_o$  Adjust
- Remote Sense
- Current Limit
- Short-Circuit Protection
- Over-Temperature Shutdown
- 19-pin SIP Package

### Specifications

| Characteristics<br>( $T_a = 25^\circ\text{C}$ unless noted) | Symbols              | Conditions  | PT3300 SERIES  |                                  |                  |                            |                  |
|---|----------------------|---|--|----------------------------------|------------------|----------------------------|------------------|
|   |                      |   | Min  | Typ                              | Max              | Units                      |                  |
| Output Current  | $I_o$                | Over $V_{in}$ range   | $V_o = +3.3\text{V}$<br>$V_o = +5.0\text{V}$<br>$V_o = +12.0\text{V}$<br>$V_o = +15.0\text{V}$ | 0.50*<br>0.50*<br>0.25*<br>0.20* | —<br>—<br>—<br>— | 8.0<br>6.0<br>2.5<br>2.0   | A<br>A<br>A<br>A |
| Short Circuit Current                                       | $I_{sc}$             | $V_{in} = +25\text{V}$  | —  | $2 \times I_{max}$               | —                | —                          | —                |
| Input Voltage Range   | $V_{in}$             | $0.5 \leq I_o \leq I_{max}$   | 20   | —                                | 60               | V                          |                  |
| Output Voltage Tolerance                                    | $\Delta V_o$         | Over $V_{in}$ range, $I_o = I_{max}$<br>$0^\circ\text{C} \leq T_a \leq +60^\circ\text{C}$ | —  | $\pm 1$                          | $\pm 3$          | % $V_o$                    |                  |
| Line Regulation   | $Reg_{line}$         | Over $V_{in}$ range   | —  | $\pm 0.5$                        | $\pm 1$          | % $V_o$                    |                  |
| Load Regulation   | $Reg_{load}$         | $0.5 \leq I_o \leq I_{max}$   | —  | $\pm 0.5$                        | $\pm 1$          | % $V_o$                    |                  |
| $V_o$ Adjust Range  | $V_{o,adj}$          | Over $V_{in}$ and $I_o$ ranges  | 90   | —                                | 110              | % $V_o$                    |                  |
| $V_o$ Ripple/Noise  | $V_n$                | $V_{in} = +24\text{V}$ , $I_o = I_{max}$  | —  | 2                                | 3                | % $V_o$                    |                  |
| Transient Response<br>with $C_{out} = 330\mu\text{F}$       | $t_{rr}$<br>$V_{os}$ | 25% load change<br>$V_o$ over/undershoot  | —  | 100<br>2                         | 250<br>5         | $\mu\text{Sec}$<br>% $V_o$ |                  |
| Efficiency  | $\eta$               | $V_{in} = +24\text{V}$ , $I_o = 0.5 \times I_{max}$                                       | $V_o = +3.3\text{V}$<br>$V_o = +5.0\text{V}$<br>$V_o = +12.0\text{V}$                          | —<br>—<br>—                      | 80<br>85<br>87   | —<br>—<br>—                | %<br>%<br>%      |
| Switching Frequency   | $f_o$                | Over $V_{in}$ and $I_o$ ranges  | 600  | 750                              | 900              | kHz                        |                  |
| Absolute Maximum<br>Operating Temperature Range             | $T_a$                | —   | -20  | —                                | +85              | $^\circ\text{C}$           |                  |
| Recommended Operating<br>Temperature Range                  | $T_a$                | Free air convection<br>Over $V_{in}$ and $I_o$ ranges                                     | -20  | —                                | +65**            | $^\circ\text{C}$           |                  |
| Storage Temperature   | $T_s$                | —   | -40  | —                                | +125             | $^\circ\text{C}$           |                  |
| Mechanical Shock  | —                    | Per Mil-STD-883D, Method 2002.3   | —  | 500                              | —                | G's                        |                  |
| Mechanical Vibration  | —                    | Per Mil-STD-883D, Method 2007.2,<br>20-2000 Hz, soldered in a PC board                    | —  | 10                               | —                | G's                        |                  |
| Weight  | —                    | —   | —  | 35                               | —                | grams                      |                  |

\*ISR will operate down to no load with reduced specifications. \*\* See Thermal Derating Curve

Note: The PT3300 Series requires a 330µF electrolytic or tantalum output capacitor for proper operation in all applications.

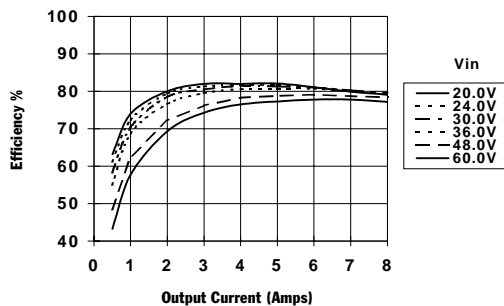
CHARACTERISTIC DATA

PT3300 Series

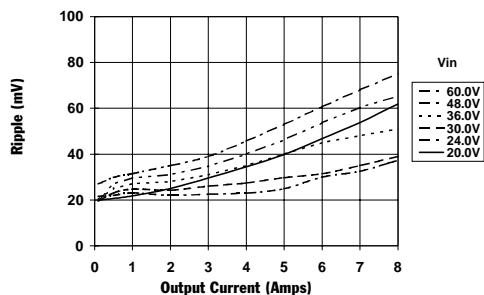
Wide Input Range Products  
DATA SHEETS

PT3301, 3.3 VDC (See Note 1)

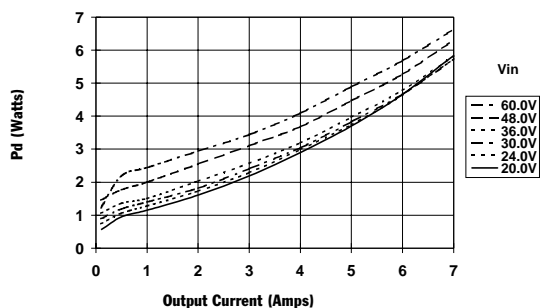
Efficiency vs Output Current



Ripple vs Output Current

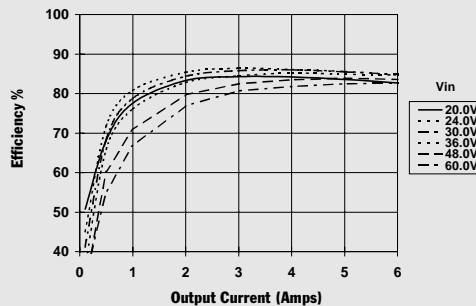


Power Dissipation vs Output Current

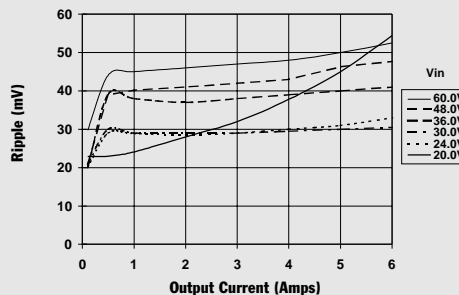


PT3302, 5.0 VDC (See Note 1)

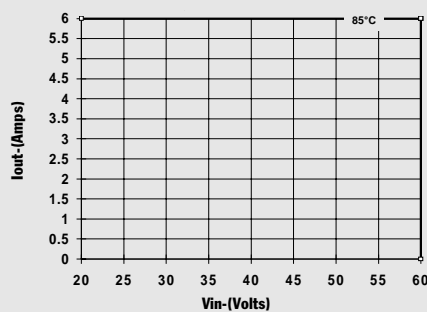
Efficiency vs Output Current



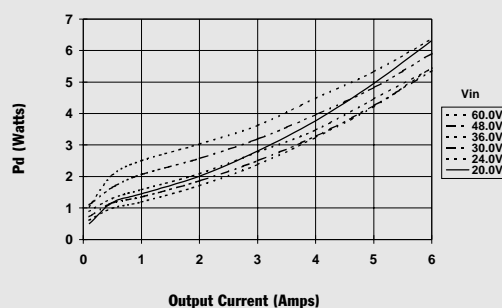
Ripple vs Output Current



Thermal Derating (Ta) (See Note 2)



Power Dissipation vs Output Current



Note 1: All data listed in the above graphs, except for derating data, has been developed from actual products tested at 25°C. This data is considered typical data for the DC-DC converter.

Note 2: Thermal derating graphs are developed in free air convection cooling of 40-60 LFM. (See Thermal Application Notes.)

# Application Notes

PT3300 Series

## More Application Notes

### Adjusting the Output Voltage of the PT3300 Wide Input Range Switching Regulator

The output voltage of the Power Trends PT3300 Series ISRs may be adjusted over a ±10% range from the factory trimmed pre-set voltage. This is accomplished with the addition of a single external resistor. Table 1 accordingly gives the allowable adjustment range for each model in the series as  $V_a$  (min) and  $V_a$  (max).

**Adjust Up:** An increase in the output voltage is obtained by adding a resistor R2, between pin 3 ( $V_o$  adjust) and pins 10-13 ( $V_o$  GND)

**Adjust Down:** Add a resistor (R1), between pin 3 ( $V_o$  adjust) and pins 14-17 ( $V_{out}$ ).

Refer to Figure 1 and Table 2 for both the placement and value of the required resistor, either (R1) or R2 as appropriate.

#### Notes:

1. Use only a single 1% resistor in either the (R1) or R2 location. Place the resistor as close to the ISR as possible.
2. Never connect capacitors from  $V_o$  adjust to either GND or  $V_{out}$ . Any capacitance added to the  $V_o$  adjust pin will affect the stability of the ISR.
3.  $V_{in}$  GND and  $V_o$  GND are connected internally and may be treated as common on the PT3300 ISR series.
4. If the Remote Sense feature is being used, connecting the resistor (R1) between pin 3 ( $V_o$  adjust) and pin 19 (Remote Sense) can benefit load regulation.
5. Adjusting  $V_{out}$  higher than that defined for the model raises the minimum input voltage by the same percentage.

Figure 1

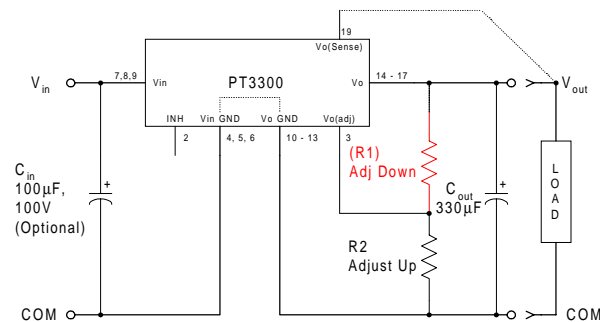


Table 1

| PT3300 ADJUSTMENT AND FORMULA PARAMETERS |        |        |        |        |
|--|--------|--------|--------|--------|
| Series Pt #                              | PT3301 | PT3302 | PT3303 | PT3304 |
| $V_o$ (nom)                              | 3.3V   | 5.5V   | 12.0V  | 15.0V  |
| $V_a$ (min)                              | 3.0V   | 4.5V   | 10.8V  | 13.5V  |
| $V_a$ (max)                              | 3.6V   | 5.5V   | 13.2V  | 16.5Vs |
| $R_o$ (kΩ)                               | 23.7   | 13.7   | 4.99   | 3.65   |

The values of (R1) [adjust down], and R2 [adjust up], can also be calculated using the following formulae.

$$(R1) = \frac{R_o (V_o - 1)(V_a - 1)}{(V_o - V_a)} - 0.48 \quad \text{k}\Omega$$

$$R2 = \frac{R_o (V_o - 1)}{V_a - V_o} - 0.48 \quad \text{k}\Omega$$

Where:  $V_o$  = Original output voltage  
 $V_a$  = Adjustd output voltage  
 $R_o$  = The value in Table 1

Table 2

| PT3300 ADJUSTMENT RESISTOR VALUES |               |               |                |                |
|-----------------------------------|---------------|---------------|----------------|----------------|
| Series Pt #                       | PT3301        | PT3302        | PT3303         | PT3304         |
| <b>Current</b>                    | <b>8Adc</b>   | <b>6Adc</b>   | <b>2.5Adc</b>  | <b>2Adc</b>    |
| <b><math>V_o</math>(nom)</b>      | <b>3.3Vdc</b> | <b>5.0Vdc</b> | <b>12.0Vdc</b> | <b>15.0Vdc</b> |
| <b><math>V_a</math>(req'd)</b>    |               |               |                |                |
| 3.0                               | (363.0)kΩ     |               |                |                |
| 3.1                               | (572.0)kΩ     |               |                |                |
| 3.2                               | (1200.0)kΩ    |               |                |                |
| 3.3                               |               |               |                |                |
| 3.4                               | 545.0kΩ       |               |                |                |
| 3.5                               | 272.0kΩ       |               |                |                |
| 3.6                               | 181.0kΩ       |               |                |                |
| 4.5                               |               | (383.0)kΩ     |                |                |
| 4.6                               |               | (493.0)kΩ     |                |                |
| 4.7                               |               | (675.0)kΩ     |                |                |
| 4.8                               |               | (1040.0)kΩ    |                |                |
| 4.9                               |               | (2140.0)kΩ    |                |                |
| 5.0                               |               |               |                |                |
| 5.1                               |               | 548.0kΩ       |                |                |
| 5.2                               |               | 274.0kΩ       |                |                |
| 5.3                               |               | 182.0kΩ       |                |                |
| 5.4                               |               | 137.0kΩ       |                |                |
| 5.5                               |               | 109.0kΩ       |                |                |
| 10.8                              |               |               | (448.0)kΩ      |                |
| 11.0                              |               |               | (548.0)kΩ      |                |
| 11.2                              |               |               | (699.0)kΩ      |                |
| 11.4                              |               |               | (951.0)kΩ      |                |
| 11.6                              |               |               | (1450.0)kΩ     |                |
| 12.0                              |               |               |                |                |
| 12.2                              |               |               | 274.0kΩ        |                |
| 12.4                              |               |               | 137.0kΩ        |                |
| 12.6                              |               |               | 91.0kΩ         |                |
| 12.8                              |               |               | 68.1kΩ         |                |
| 13.0                              |               |               | 54.4kΩ         |                |
| 13.2                              |               |               | 45.3kΩ         |                |
| 13.5                              |               |               |                | (425.0)kΩ      |
| 14.0                              |               |               |                | (664.0)kΩ      |
| 14.5                              |               |               |                | (1379.0)kΩ     |
| 15.0                              |               |               |                |                |
| 15.5                              |               |               |                | 102.0kΩ        |
| 16.0                              |               |               |                | 50.6kΩ         |
| 16.5                              |               |               |                | 33.6kΩ         |

R1 = (Red) R2 = Black

## **IMPORTANT NOTICE**

Texas Instruments and its subsidiaries (TI) reserve the right to make changes to their products or to discontinue any product or service without notice, and advise customers to obtain the latest version of relevant information to verify, before placing orders, that information being relied on is current and complete. All products are sold subject to the terms and conditions of sale supplied at the time of order acknowledgement, including those pertaining to warranty, patent infringement, and limitation of liability.

TI warrants performance of its semiconductor products to the specifications applicable at the time of sale in accordance with TI's standard warranty. Testing and other quality control techniques are utilized to the extent TI deems necessary to support this warranty. Specific testing of all parameters of each device is not necessarily performed, except those mandated by government requirements.

**CERTAIN APPLICATIONS USING SEMICONDUCTOR PRODUCTS MAY INVOLVE POTENTIAL RISKS OF DEATH, PERSONAL INJURY, OR SEVERE PROPERTY OR ENVIRONMENTAL DAMAGE ("CRITICAL APPLICATIONS"). TI SEMICONDUCTOR PRODUCTS ARE NOT DESIGNED, AUTHORIZED, OR WARRANTED TO BE SUITABLE FOR USE IN LIFE-SUPPORT DEVICES OR SYSTEMS OR OTHER CRITICAL APPLICATIONS. INCLUSION OF TI PRODUCTS IN SUCH APPLICATIONS IS UNDERSTOOD TO BE FULLY AT THE CUSTOMER'S RISK.**

In order to minimize risks associated with the customer's applications, adequate design and operating safeguards must be provided by the customer to minimize inherent or procedural hazards.

TI assumes no liability for applications assistance or customer product design. TI does not warrant or represent that any license, either express or implied, is granted under any patent right, copyright, mask work right, or other intellectual property right of TI covering or relating to any combination, machine, or process in which such semiconductor products or services might be or are used. TI's publication of information regarding any third party's products or services does not constitute TI's approval, warranty or endorsement thereof.