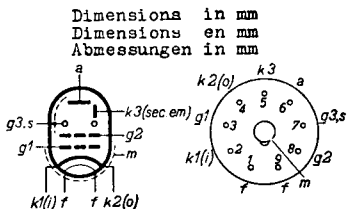


SECONDARY EMISSION PENTODE for television purposes  
 PENTHODE A EMISSION SECONDAIRE pour la télévision  
 SEKUNDAREMISSIONSPENTHODE für Fernseh Zwecke

Heating: indirect by A.C. or D.C.; parallel supply  
 Chauffage: indirect par C.A. ou C.C.; Vf = 6,3 V  
 alimentation en parallèle If = 0,37 A  
 Heizung: indirekt durch Wechsel- oder Gleichstrom; Parallelspeisung



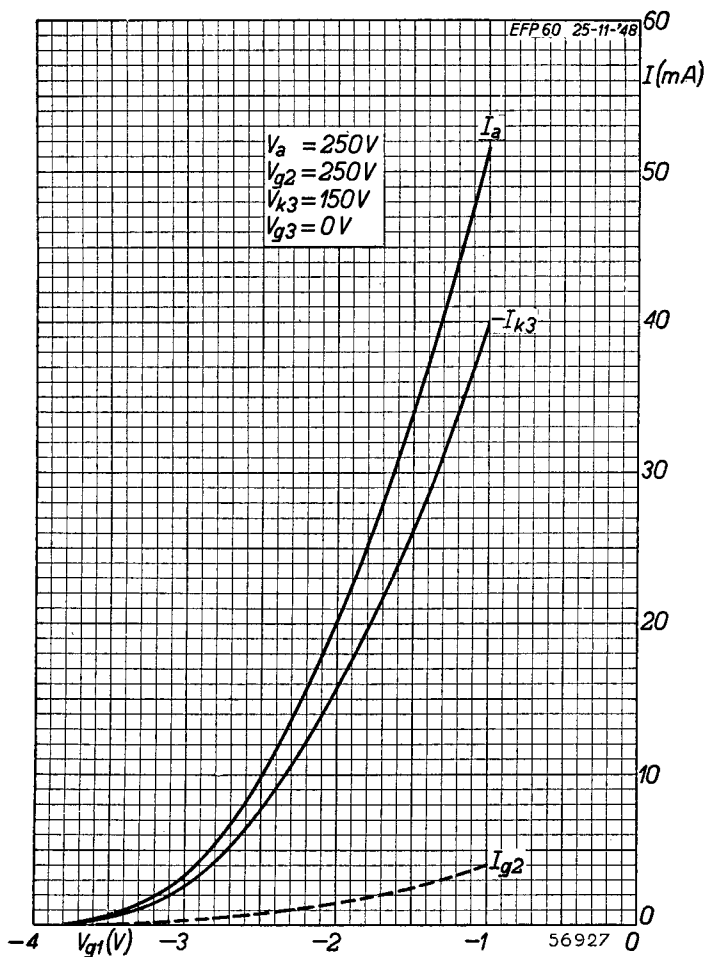
Capacities  
 Capacités  
 Kapazitäten

Ca = 6 pF  
 Cg1 = 9,2 pF  
 Cag1 < 0,004 pF

Typical characteristics  
 Caractéristiques typiques  
 Kenndaten

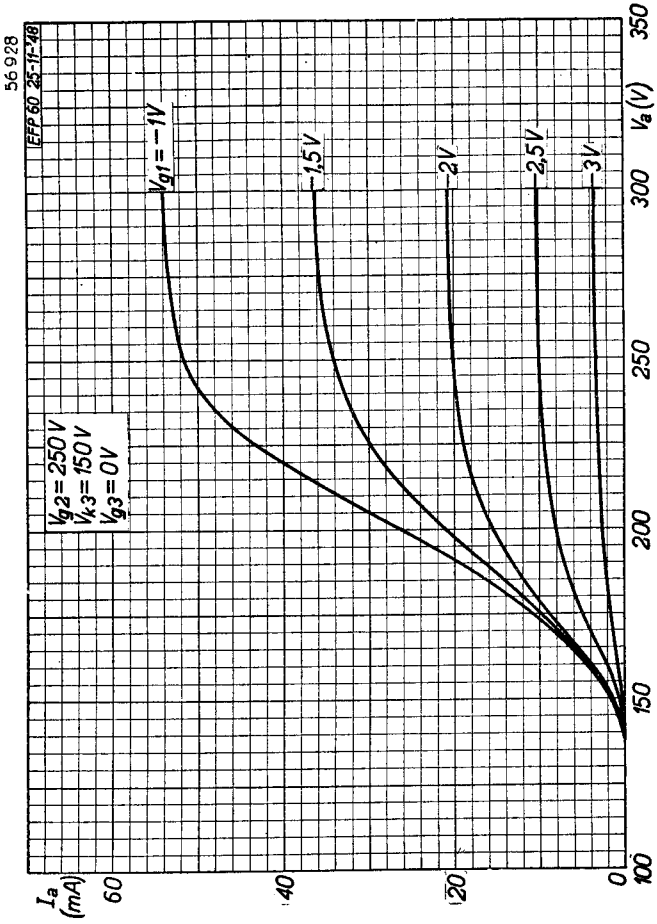
Va = 250 V  
 Vk3 = 150 V  
 Vg3 = 0 V  
 Vg2 = 250 V  
 Vg1 = -2 V  
 Ia = 20 mA  
 Ik3 = -15,6 mA  
 Ig2 = 1,5 mA  
 S = 25 mA/V  
 $\mu$ g2g1 = 110 -  
 R1 = 70 k $\Omega$



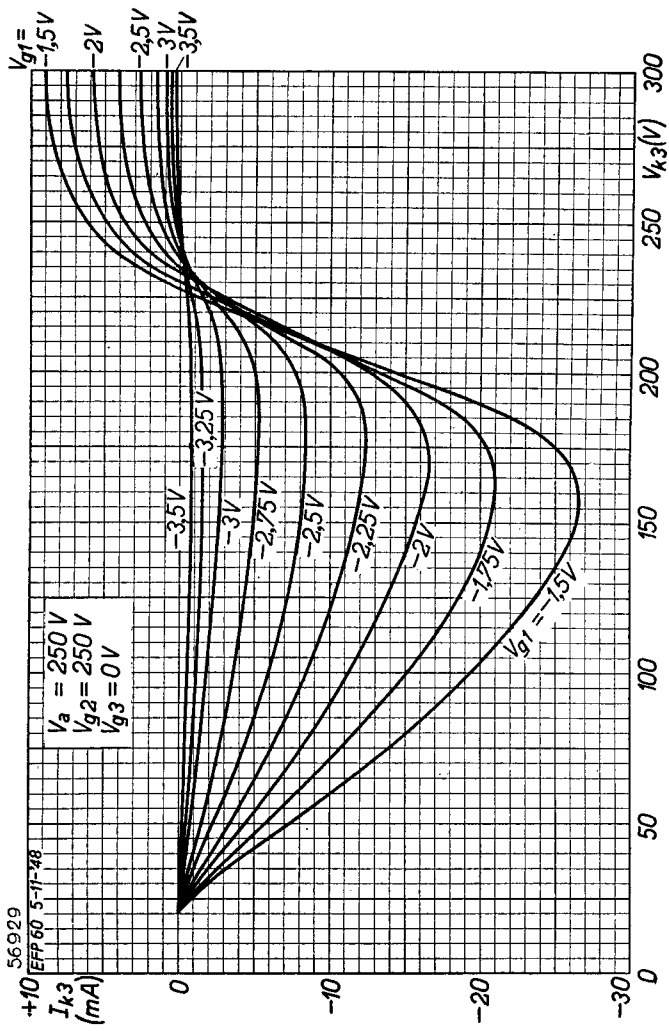


EFP 60

PHILIPS



B



**PHILIPS**



*Electronic  
Tube*

**HANDBOOK**

<b>page</b>	<b>EFP60 sheet</b>	<b>date</b>
1	1	1948.10.06
2	2	1948.10.06
3	A	1949.01.25
4	B	1949.01.25
5	C	1949.01.25
6	FP	1999.07.04