

# PHOTOTUBE

## DESCRIPTION

The GL-922 is a cartridge-type, two-electrode phototube for relay- and light-measurement applications. It is highly sensitive to red light and infra-

red radiation. The double-edged design, with a terminal at each end, provides a compact phototube useful in many applications where space is restricted.

## TECHNICAL INFORMATION

*These data are for reference only. For design information refer to specifications.*

## GENERAL CHARACTERISTICS

Number of electrodes . . . . . 2

### Electrical

Spectral response . . . . .	S-1	
Luminous sensitivity at 250 volts, 0 cycles . . . . .	20	microamperes per lumen
Interelectrode capacitance . . . . .	0.5	micromicrofarad
Wavelength of maximum response . . . . .	.8000	angstroms
Sensitivity at maximum response . . . . .	0.0020	microampere per microwatt



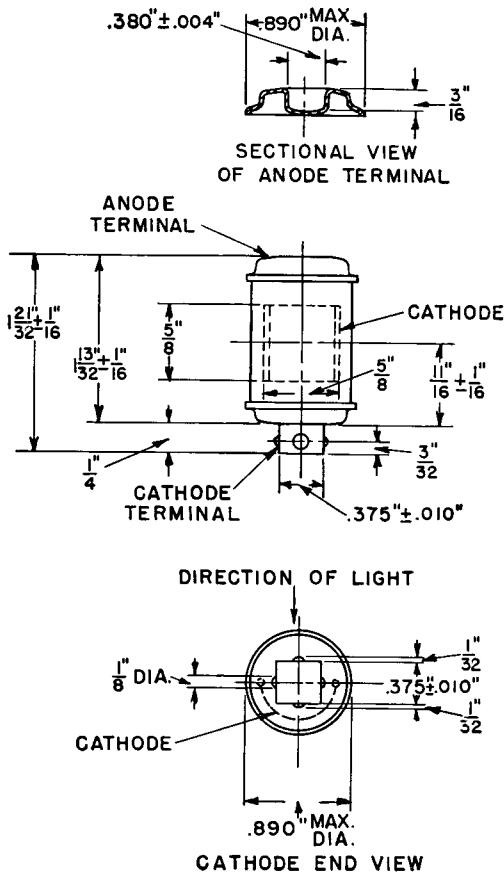
**TECHNICAL INFORMATION (CONT'D)**

**Mechanical**

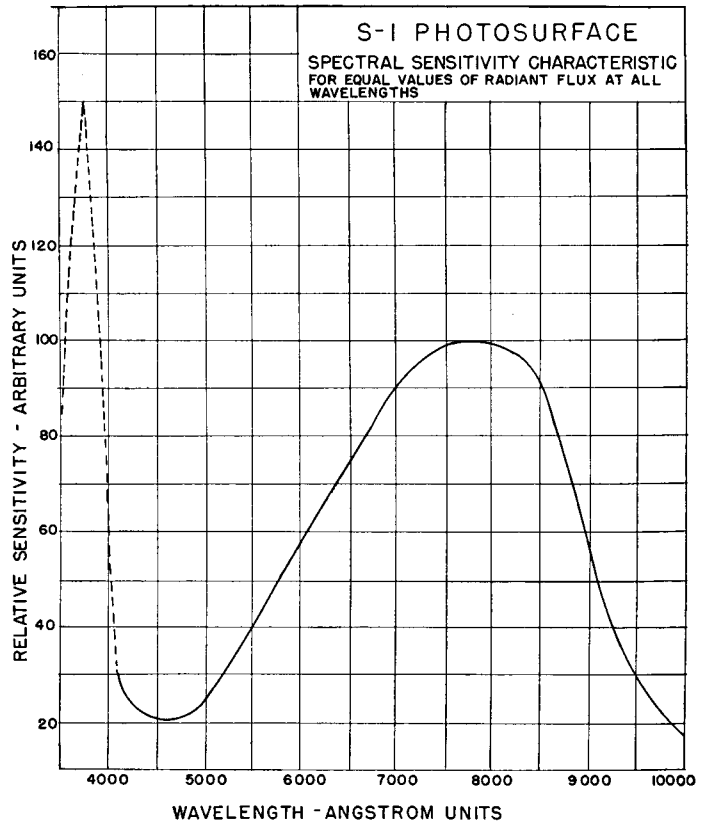
Window dimensions.....	$\frac{5}{8} \times \frac{5}{8}$ inches
Seated height to center of useful cathode area.....	$\frac{11}{16} \pm \frac{1}{16}$ inches
Maximum over-all height.....	$1\frac{23}{32}$ inches
Maximum seated height.....	$1\frac{15}{32}$ inches
Maximum diameter.....	0.890 inch
Mounting position.....	Any
Net weight, approx.....	$\frac{1}{4}$ ounce
Shipping weight, approx.....	.3 pounds

**MAXIMUM RATINGS**

Anode voltage, d-c or peak a-c.....	500 volts
Cathode current density.....	152 microamperes per square inch
Ambient temperature.....	100 centigrade



OUTLINE  
 GL-922 PHOTOTUBE  
 K-8639380 6-30-44



K-8639626

4-17-44