

New Jersey Semi-Conductor Products, Inc.

20 STERN AVE.
 SPRINGFIELD, NEW JERSEY 07081
 U.S.A.

TELEPHONE: (973) 376-2922
 (212) 227-6005
 FAX: (973) 376-8960

2N1618

2N1724

2N2101

2N1208 – 2N1212

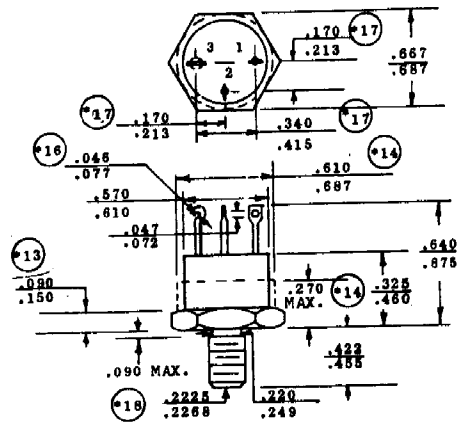
2N1616/A – 2N1617/A

POWER TRANSISTORS



TO-61

| TYPE NO. | PT @ 25°C Watts | MAXIMUM RATINGS | | | | h _{FE} | | Sat Voltages | | | | Test Conditions | | I _{EB0} ma |
|----------|-----------------|-------------------|-------------------|-------------------|----------------|-----------------|-----|----------------|-----------------|-----------------|-----------------|-----------------|----------------|---------------------|
| | | BV _{CB0} | BV _{CE0} | BV _{EB0} | I _c | MIN | MAX | I _c | V _{CE} | V _{CE} | V _{BE} | I _c | I _B | |
| | | V | V | V | A | | | | | | | | | |
| 2N1208 | 85 | 60 | 60 | 10 | 5 | 15 | 60 | 2 | 12 | 5 | 4 | 2 | .25 | 10 |
| 2N1209 | 85 | 60 | 45 | 5 | 5 | 20 | 80 | 2 | 12 | 3 | 4 | 2 | .25 | 10 |
| 2N1212 | 85 | 60 | 60 | 10 | 5 | 12 | 36 | 1 | 15 | 5 | 8 | 1 | .2 | 10 |
| 2N1616 | 60 | 60 | 60 | 18 | 5 | 15 | 75 | 2 | 12 | 2 | 3 | 2 | .25 | 10 |
| 2N1616A | 85 | 60 | 60 | 10 | 7.5 | 20 | 60 | 2 | 4 | 1 | 2 | 2 | .2 | .050 |
| 2N1617 | 60 | 80 | 80 | 8 | 5 | 15 | 75 | 2 | 12 | 2 | 3 | 2 | .25 | 10 |
| 2N1617A | 85 | 80 | 70 | 10 | 7.5 | 20 | 60 | 2 | 4 | 1 | 2 | 2 | .2 | .050 |
| 2N1618 | 60 | 100 | 80 | 8 | 5 | 15 | 75 | 2 | 12 | 2 | 3 | 2 | .25 | 10 |
| *2N1724 | 50 | 175 | 80 | 10 | 5 | 30 | 90 | 2 | 15 | .6 | 1.2 | 2 | .2 | .4 |
| 2N2101 | 75 | 60 | 40 | 10 | 3 | 15 | 60 | 1 | 15 | 5 | 8 | 1 | .2 | .050 |



NJ Semi-Conductors reserves the right to change test conditions, parameter limits and package dimensions without notice. Information furnished by NJ Semi-Conductors is believed to be both accurate and reliable at the time of going to press. However NJ Semi-Conductors assumes no responsibility for any errors or omissions discovered in its use. NJ Semi-Conductors encourages customers to verify that datasheets are current before placing orders.