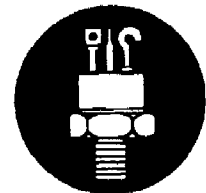


2N1647 – 2N1650

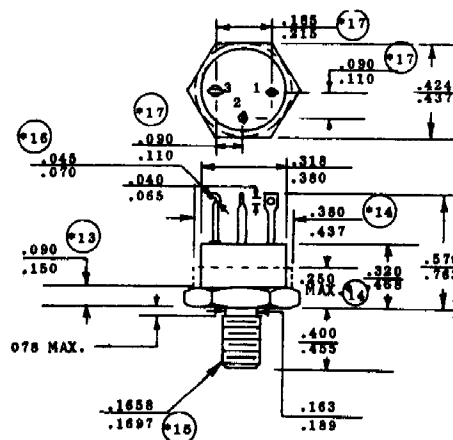
2N1886

2N2828 – 2N2829

TYPE NO.	PT @ 25°C Watts	MAXIMUM RATINGS				hFE		@				Sat Voltages		Test Conditions		I _{EBO} ma
		BV _{CE0}	BV _{CE0}	BV _{EB0}	I _C	MIN	MAX	I _C	V _{CE}	V _{CE}	V _{BE}	I _C	I _B			
		V	V	V	A									A	V	
2N1647	40	80	60	6	3	15	45	.5	10	3.0	3.5	1	.1	.250		
2N1648	40	120	80	6	3	15	45	.5	10	3.0	3.5	1	.1	.250		
2N1649	40	80	60	6	3	30	90	.5	10	3.0	3.5	1	.1	.250		
2N1650	40	120	80	6	3	30	90	.5	10	3.0	3.5	1	.1	.250		
2N1886	40	60	60	6	3	20	80	.5	10	2.5	3.0	1	.1	.250		
2N2828	40	80	60	10	3	20	60	.5	4	.4	1.2	.5	.05	.050		
2N2829	40	80	60	10	3	20	60	1.0	4	.3	1.2	1	.1	.050		



TO-59



NJ Semi-Conductors reserves the right to change test conditions, parameter limits and package dimensions without notice. Information furnished by NJ Semi-Conductors is believed to be both accurate and reliable at the time of going to press. However NJ Semi-Conductors assumes no responsibility for any errors or omissions discovered in its use. NJ Semi-Conductors encourages customers to verify that datasheets are current before placing orders.