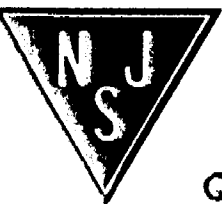
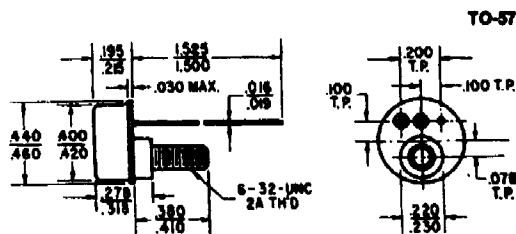


POWER TRANSISTORS

TYPE NO.	PT @ 25°C	MAXIMUM RATINGS				h _{FE}		Sat Voltages @				Test Conditions			I _{ESD} ma
		BV _{CEO}	BV _{CBO}	BV _{ESD}	I _C	MIN	MAX	I _C	V _{CE}	V _{CE}	V _{BE}	I _C	I _B		
		V	V	V	A			A	V	V	V	A	A		
2N1047	40	80	80	6	.5	12	36	.5	10	7.5	6.0	.5	.1	250	
2N1048	40	120	120	6	.5	12	36	.5	10	7.5	6.0	.5	.1	250	
2N1049	40	80	80	6	.5	30	90	.5	10	7.5	6.0	.5	.1	250	
2N1050	40	120	120	6	.5	30	90	.5	10	7.5	6.0	.5	.1	250	
†2N1047A	40	80	80	10	.5	12	36	.5	10	7.5	6.0	.5	.1	250	
†2N1048A	40	120	120	10	.5	12	36	.5	10	7.5	6.0	.5	.1	250	
†2N1049A	40	80	80	10	.5	30	90	.5	10	7.5	6.0	.5	.1	250	
†2N1050A	40	120	120	10	.5	30	90	.5	10	7.5	6.0	.5	.1	.010	
2N1047B	40	80	80	10	.75	12	36	.5	10	2.0	1.6	.5	.1	.010	
2N1048B	40	120	120	10	.75	12	36	.5	10	2.0	1.6	.5	.1	.010	
2N1049B	40	80	80	10	.75	30	90	.5	10	2.0	1.6	.5	.1	.010	
2N1050B	40	120	120	10	.75	30	90	.5	10	2.0	1.6	.5	.1	.010	
2N1690	40	80	80	10	.5	20	60	.5	10	7.5	6.0	.5	.1	250	
2N1691	40	120	120	10	.5	20	60	.5	10	7.5	6.0	.5	.1	250	
2N1768	40	60	40	12	3.0	35	100	.75	4	.75	2.5	.5	.1	.015	
2N1769	40	100	55	12	3.0	35	100	.75	4	.75	2.5	.5	.1	.015	



NJ Semi-Conductors reserves the right to change test conditions, parameter limits and package dimensions without notice. Information furnished by NJ Semi-Conductors is believed to be both accurate and reliable at the time of going to press. However, NJ Semi-Conductors assumes no responsibility for any errors or omissions discovered in its use. NJ Semi-Conductors encourages customers to verify that datasheets are current before placing orders.