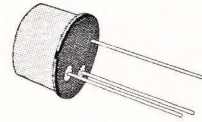


VHF-UHF POWER AMPLIFIER

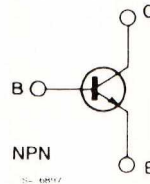
DESCRIPTION

The 2N3866 and BFR97 are silicon planar epitaxial NPN transistor in Jedec TO-39 metal case. They are designed for VHF-UHF class A, B, or C amplifier circuits and oscillator applications.



TO-39

INTERNAL SCHEMATIC DIAGRAM



ABSOLUTE MAXIMUM RATINGS

Symbol	Parameter	Value	Unit
V_{CES}	Collector-emitter Voltage ($V_{BE} = 0$)	55	V
V_{CEO}	Collector-emitter Voltage ($I_B = 0$)	30	V
V_{EBO}	Emitter-base Voltage ($I_C = 0$)	3.5	V
I_C	Collector Current	0.5	A
P_{tot}	Total Power Dissipation at $T_{case} \leq 25^\circ\text{C}$	5	W
T_{stg}, T_j	Storage and Junction Temperature	- 65 to 200	$^\circ\text{C}$

THERMAL DATA

$R_{th\ j\ case}$	Thermal Resistance Junction-case	Max	35	$^{\circ}C/W$
-------------------	----------------------------------	-----	----	---------------

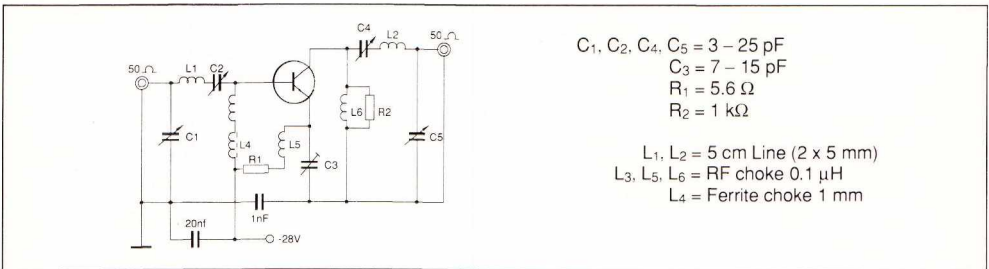
ELECTRICAL CHARACTERISTICS($T_{amb} = 25\ ^{\circ}C$ unless otherwise specified)

Symbol	Parameter	Test Conditions	Min.	Typ.	Max.	Unit
I_{CEO}	Collector Cutoff Current ($I_B = 0$)	$V_{CE} = 28\ V$			20	μA
$V_{(BR)CES}$	Collector-emitter Breakdown Voltage ($V_{BE} = 0$)	$I_C = 0.1\ mA$	55			V
$V_{CEO(sus)}^*$	Collector-emitter Sustaining Voltage ($I_B = 0$)	$I_C = 5\ mA$	30			V
$V_{(BR)EBO}$	Emitter-base Breakdown Voltage ($I_C = 0$)	$I_E = 100\ \mu A$	3.5			V
$V_{CE(sat)}^*$	Collector-emitter Saturation Voltage	$I_C = 100\ mA$ $I_B = 20\ mA$			1	V
h_{FE}^*	DC Current Gain	$I_C = 50\ mA$ $V_{CE} = 5\ V$ $I_C = 360\ mA$ $V_{CE} = 5\ V$	10 5		200	
f_T	Transition Frequency	$I_C = 50\ mA$ $V_{CE} = 15\ V$ $f = 200\ MHz$	500			MHz
C_{CBO}	Collector-base Capacitance	$I_E = 0$ $V_{CB} = -28\ V$ $f = 1\ MHz$			3	pF
P_o^{**}	Output Power	$V_{CC} = -28\ V$ $P_i = 100\ mW$ $f = 400\ MHz$	1			W
η^{**}	Collector Efficiency	$V_{CC} = -28\ V$ $P_o = 1\ W$ $f = 400\ MHz$	45			%

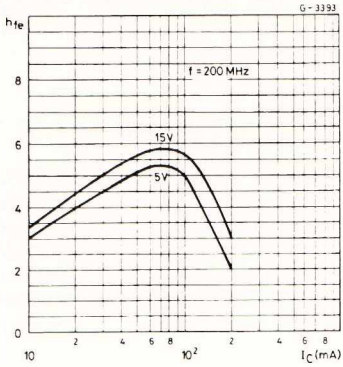
* Plused : pulse duration = 300 ms, duty cycle = 1 %.

** See test circuit.

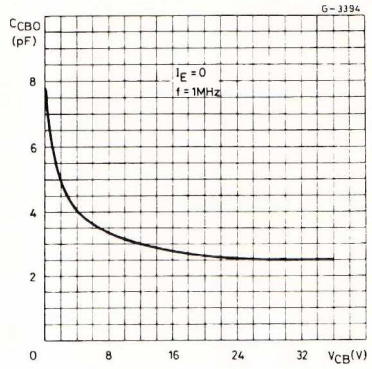
Test Circuit for Power Output Measurement (f = 400 MHz).



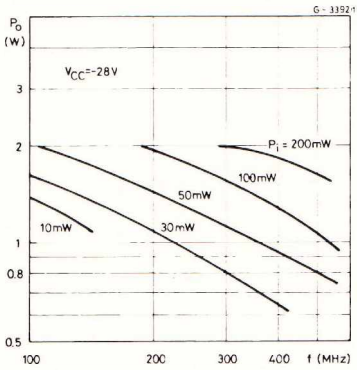
High Frequency Current Drain.



Collector-base Capacitance.



RF Output Power.



Power Rating Chart.

