

CentralTM Semiconductor Corp.

145 Adams Avenue, Hauppauge, NY 11788 USA
Tel: (631) 435-1110 • Fax: (631) 435-1824

Manufacturers of World Class Discrete Semiconductors

2N491
2N491A
2N491B

SILICON UNIJUNCTION TRANSISTOR

JEDEC TO-5 CASE**

DESCRIPTION

The CENTRAL SEMICONDUCTOR 2N491 series is a PN type Silicon Unijunction Transistor designed for general purpose industrial applications.

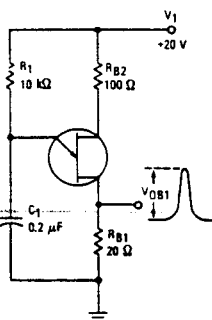
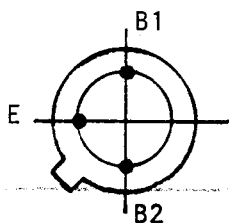
MAXIMUM RATINGS (T_A=25°C)

	SYMBOL	2N491	2N491A	2N491B	UNIT
RMS Power Dissipation	P _D (RMS)	600	600	600	mW
RMS Emitter Current	I _E (RMS)	70	70	70	mA
Peak Emitter Current (T _J =150°C)	I _E	2.0	2.0	2.0	A
Emitter Reverse Voltage (T _J =150°C)	V _{B2E}	60	60	60	V
Operating and Storage, Junction Temperature	T _J , T _{stg}	-65 TO + 175			°C

ELECTRICAL CHARACTERISTICS (T_A=25°C)

SYMBOL	TEST CONDITIONS	MIN	MAX	UNIT
n	V _{BB} =10V	0.56	0.68	-
R _{BB0}	V _{BB} =3V	4.7	6.8	-
I _{B2} (MOD)	V _{BB} =10V, I _E =50mA	6.8	22	mA
V _E (SAT)	V _{BB} =10V, I _E =50mA (2N491)	-	5.0	V
V _E (SAT)	V _{BB} =10V, I _E =50mA (2N491A, 2N491B)	-	4.3	V
I _{EB20}	V _{B2E} =60V	-	2.0	uA
I _{EB20}	V _{B2E} =10V, T _J =150°C	-	20	uA
I _{EB20}	V _{B2E} =30V (2N491B)	-	0.2	uA
I _P	V _{BB} =25V (2N491, 2N491A)	-	12	uA
I _P	V _{BB} =25V (2N491B)	-	6.0	uA
I _V	V _{BB} =20V, R _{B2} =100 OHMS	8.0	-	mA
V _{OB1}	V ₁ =20V, (2N491A, 2N491B)	3.0	-	V

*CONFORMS TO JEDEC TO-5 OUTLINE EXCEPT FOR LEAD CONFIGURATION. V_{OB1} TEST CIRCUIT



η TEST CIRCUIT

