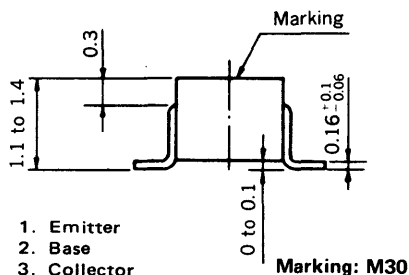
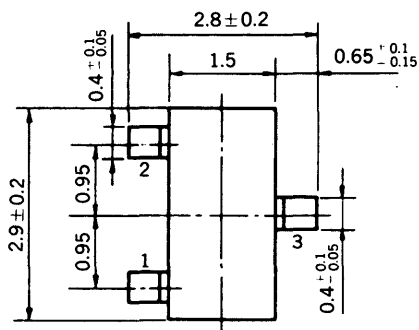


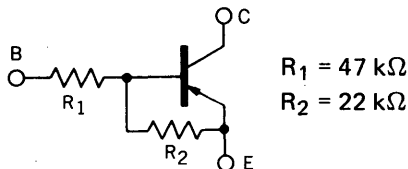
**MEDIUM SPEED SWITCHING
RESISTOR BUILT-IN TYPE PNP TRANSISTOR
MINI MOLD**

PACKAGE DIMENSIONS
in millimeters



FEATURES

- Resistors Built-in TYPE



- Complementary to FA1L4L

ABSOLUTE MAXIMUM RATINGS

Maximum Voltages and Currents ($T_a = 25^\circ\text{C}$)

Collector to Base Voltage	V_{CBO}	-60	V
Collector to Emitter Voltage	V_{CEO}	-50	V
Emitter to Base Voltage	V_{EBO}	-15	V
Collector Current (DC)	I_C	-100	mA
Collector Current (Pulse)	I_C	-200	mA
Maximum Power Dissipation			
Total Power Dissipation			
at 25°C Ambient Temperature	P_T	200	mW
Maximum Temperatures			
Junction Temperature	T_j	150	$^\circ\text{C}$
Storage Temperature Range	T_{stg}	-55 to +150	$^\circ\text{C}$

ELECTRICAL CHARACTERISTICS ($T_a = 25^\circ\text{C}$)

CHARACTERISTIC	SYMBOL	MIN.	TYP.	MAX.	UNIT	TEST CONDITIONS
Collector Cutoff Current	I_{CBO}			-100	nA	$V_{CB} = -50\text{ V}, I_E = 0$
DC Current Gain	h_{FE1}^*	60	95	195		$V_{CE} = -5.0\text{ V}, I_C = -5.0\text{ mA}$
DC Current Gain	h_{FE2}^*	95	185			$V_{CE} = -5.0\text{ V}, I_C = -50\text{ mA}$
Collector Saturation Voltage	$V_{CE(sat)}^*$		-0.04	-0.2	V	$I_C = -5.0\text{ mA}, I_B = -0.25\text{ mA}$
Low-Level Input Voltage	V_{IL}^*		-1.83	-0.9	V	$V_{CE} = -5.0\text{ V}, I_C = -100\text{ }\mu\text{A}$
High-Level Input Voltage	V_{IH}^*	-6.0	-3.0		V	$V_{CE} = -0.2\text{ V}, I_C = -5.0\text{ mA}$
Input Resistor	R_1	32.9	47.0	61.1	k Ω	
E-B Resistor	R_2	15.4	22.0	28.6	k Ω	
Turn-on Time	t_{on}		0.5	1.0	μs	$V_{CC} = -5\text{ V}, V_{in} = -5\text{ V}$ $R_L = 1\text{ k}\Omega$ $PW = 2\text{ }\mu\text{s}, \text{Duty Cycle} \leq 2\%$
Storage Time	t_{stg}		0.6	3.0	μs	
Turn-off Time	t_{off}		0.9	4.0	μs	

* Pulsed: $PW \leq 350\text{ }\mu\text{s}, \text{Duty Cycle} \leq 2\%$

TYPICAL CHARACTERISTICS ($T_a = 25^\circ\text{C}$)

