

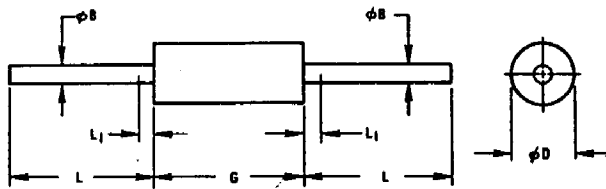
# New Jersey Semi-Conductor Products, Inc.

20 STERN AVE.  
SPRINGFIELD, NEW JERSEY 07081  
U.S.A.

TELEPHONE: (973) 376-2922  
(212) 227-6005  
FAX: (973) 376-8960

JEDEC Types	• Very High Q • Low Voltage • Low Leakage			• Very High Q • Intermediate Voltage • Low Leakage			• High Q • Low Voltage • General Purpose			• Low Voltage • Low Leakage			• High Voltage • Low Leakage			
	CAP Ratio 2-30 V Min.	Q @ 4.0 V 50 MHz Min.	Device Type	CAP Ratio 2-40 V Min.	Q @ 4.0 V 50 MHz Min.	Device Type	CAP Ratio 2-30 V Min.	Q @ 4.0 V 50 MHz Min.	Device Type	CAP Ratio 0.1-4 V Min.	Max. Working Voltage (MWV)	Device Type	CAP Ratio 0.1-4 V Min.	Max. Working Voltage (MWV)	Device Type	
C <sub>T</sub> Nominal Capacitance pF ± 10% @ V <sub>R</sub> = 4.0 V f = 1.0 MHz	3.9	2.5	600													
	4.7	2.6	600				2.4	450	1N5440A							
	5.6	2.6	600													
	6.8	2.7	600	1N5461A	3.1	600	1N5681A	2.5	450	1N5441A	2.4	25	1N4786A	2.4	100	1N4801A
	8.2	2.8	600	1N5462A	3.1	600	1N5682A	2.5	450	1N5442A	2.4	25	1N4787A	2.4	100	1N4802A
	10	2.8	550	1N5463A	3.2	550	1N5683A	2.6	400	1N5443A	2.4	25	1N4788A	2.4	100	1N4803A
	12	2.8	550	1N5464A	3.2	550	1N5684A	2.6	400	1N5444A	2.4	25	1N4789A	2.4	100	1N4804A
	15	2.8	550	1N5465A	3.2	550	1N5685A	2.6	400	1N5445A	2.4	25	1N4790A	2.4	100	1N4805A
	18	2.9	500	1N5466A	3.2	500	1N5686A	2.6	350	1N5446A	2.4	20	1N4791A	2.4	90	1N4806A
	20	2.9	500	1N5467A				2.6	350	1N5447A						
	22	2.9	500	1N5468A	3.3	500	1N5687A	2.6	350	1N5448A	2.4	20	1N4792A	2.4	90	1N4807A
	27	2.9	500	1N5469A	3.3	500	1N5688A	2.6	350	1N5449A	2.4	20	1N4793A	2.4	65	1N4808A
	33	2.9	500	1N5470A	3.3	500	1N5689A	2.6	350	1N5450A	2.4	20	1N4794A	2.4	60	1N4809A
	39	2.9	450	1N5471A	3.3	450	1N5690A	2.6	300	1N5451A	2.3	20	1N4795A	2.3	55	1N4810A
	47	2.9	400	1N5472A	3.3	400	1N5691A	2.6	250	1N5452A	2.3	20	1N4796A	2.3	50	1N4811A
	56	2.9	300	1N5473A	3.3	300	1N5692A	2.6	200	1N5453A	2.3	15	1N4797A	2.3	40	1N4812A
	68	2.9	250	1N5474A	3.3	250	1N5693A	2.7	175	1N5454A	2.3	15	1N4798A	2.3	30	1N4813A
	82	2.9	225	1N5475A	3.3	225	1N5694A	2.7	175	1N5455A	2.3	15	1N4799A	2.3	20	1N4814A
100	2.9	200	1N5476A	3.3	200	1N5695A	2.7	175	1N5456A	2.2	15	1N4800A	2.2	20	1N4815A	

Capacitance Tolerance: No suffix = 20%, A = 10%, B = 5%, C = 2%, and D = 1%

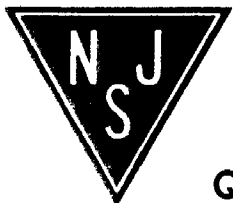


MILLIMETER DIMENSIONS ARE DERIVED FROM ORIGINAL INCH DIMENSIONS

SYMBOL	INCHES		MILLIMETERS		NOTES
	MIN.	MAX.	MIN.	MAX.	
φB	.018	.022	0.458	0.558	-
φD	.085	.107	2.16	2.71	1
G	.230	.300	5.85	7.62	1
L	1.000	-	25.40	-	-
L <sub>1</sub>	-	.050	-	1.27	2

NOTES:

1. PACKAGE CONTOUR OPTIONAL WITHIN CYLINDER OF DIAMETER φD AND LENGTH G. SLUGS, IF ANY, SHALL BE INCLUDED WITHIN THIS CYLINDER BUT SHALL NOT BE SUBJECT TO THE MINIMUM LIMIT OF φD.
2. LEAD DIAMETER NOT CONTROLLED IN THIS ZONE TO ALLOW FOR FLASH, LEAD FINISH BUILD-UP, AND MINOR IRREGULARITIES OTHER THAN SLUGS.



NJ Semi-Conductors reserves the right to change test conditions, parameter limits and package dimensions without notice. Information furnished by NJ Semi-Conductors is believed to be both accurate and reliable at the time of going to press. However, NJ Semi-Conductors assumes no responsibility for any errors or omissions discovered in its use. NJ Semi-Conductors encourages customers to verify that datasheets are current before placing orders.

**Quality Semi-Conductors**