

aiwa



CDC-R136

STEREO CAR CD RECEIVER

• TYPE: YZ

SIMPLE MANUAL

• Replace this Service Manual with "Revision Publishing" when it is issued.

S/M Code No. 09-993-412-0T1

MANUAL
SERVICE

ELECTRICAL MAIN PARTS LIST - 1/3

NOTE: The characters in the suffix column indicate the part usage.

| YZSF | REF.NO | PARTS NO. | XX KANRI NO. | DESCRIPTION | A SUFFIX |
|------|--------|----------------|--------------------|---------------------------|-------------|
| C | 908 | 87-010-196-080 | | CHIP CAPACITOR,0.1-25 | A..... |
| C | 909 | 87-010-315-080 | | C-CAP,S 27P-50 CH | A..... |
| C | 907 | 87-010-497-040 | | CAP,E 4.7-35 GAS | A..... |
| C | 905 | 87-010-498-040 | | CAP,E 10-16 GAS | A..... |
| C | 906 | 87-010-553-040 | | CAP,E 47-16 GAS | A..... |
| C | 912 | 87-010-196-080 | | CHIP CAPACITOR,0.1-25 | A..... |
| C | 915 | 87-010-198-080 | | CAP, CHIP 0.022 | A..... |
| C | 918 | 87-010-198-080 | | CAP, CHIP 0.022 | A..... |
| C | 913 | 87-010-198-080 | | CAP, CHIP 0.022 | A..... |
| C | 914 | 87-010-198-080 | | CAP, CHIP 0.022 | A..... |
| C | 910 | 87-010-221-080 | | CAP, ELECT 470-10V | A..... |
| C | 911 | 87-010-315-080 | | C-CAP,S 27P-50 CH | A..... |
| C | 917 | 87-010-322-080 | | C-CAP,S 100P-50 CH | A..... |
| C | 916 | 87-010-322-080 | | C-CAP,S 100P-50 CH | A..... |
| C | 928 | 87-010-178-080 | | CHIP CAP 1000P | A..... |
| C | 927 | 87-010-196-080 | | CHIP CAPACITOR,0.1-25 | A..... |
| C | 920 | 87-010-198-080 | | CAP, CHIP 0.022 | A..... |
| C | 926 | 87-010-555-040 | | CAP,E 100-10 GAS | A..... |
| D | 908 | 87-017-931-080 | | ZENER,MTZJ5.6B | A..... |
| D | 909 | 87-027-262-010 | | LEDE,TLR-124(RED) | A..... |
| D | 917 | 87-017-932-080 | | ZENER,MTJ6.2B | A..... |
| D | 916 | 87-017-932-080 | | ZENER,MTJ6.2B | A..... |
| D | 919 | 87-017-932-080 | | ZENER,MTJ6.2B | A..... |
| D | 918 | 87-017-932-080 | | ZENER,MTJ6.2B | A..... |
| D | 910 | 87-020-465-080 | | DIODE,1SS133 (110MA) | A..... |
| D | 912 | 87-020-465-080 | | DIODE,1SS133 (110MA) | A..... |
| D | 914 | 87-020-465-080 | | DIODE,1SS133 (110MA) | A..... |
| D | 913 | 87-020-465-080 | | DIODE,1SS133 (110MA) | A..... |
| D | 920 | 87-017-932-080 | | ZENER,MTJ6.2B | A..... |
| D | 924 | 87-017-932-080 | | ZENER,MTJ6.2B | A..... |
| D | 921 | 87-017-932-080 | | ZENER,MTJ6.2B | A..... |
| D | 927 | 87-020-465-080 | | DIODE,1SS133 (110MA) | A..... |
| D | 922 | 87-020-465-080 | | DIODE,1SS133 (110MA) | A..... |
| D | 928 | 87-A40-509-080 | | ZENER,MTZJ6.8C | A..... |
| D | 929 | 87-A40-650-080 | | ZENER,MTZJ6.8A | A..... |
| D | 931 | 87-017-932-080 | | ZENER,MTJ6.2B | A..... |
| D | 930 | 87-017-932-080 | | ZENER,MTJ6.2B | A..... |
| IC | 903 | 87-020-784-080 | | IC,TC4053BF | A..... |
| IC | 901 | 87-A21-267-010 | | C-IC,UPD178018AGC-531-3B9 | A..... |
| IC | 902 | 88-KT1-606-080 | | IC,PST994D | A..... |
| L | 902 | 87-003-149-080 | | COIL,47UH | A..... |
| L | 903 | 87-003-149-080 | | COIL,47UH | A..... |
| Q | 907 | 87-026-235-080 | | CHIP-TR,DTC114EK | A..... |
| Q | 908 | 87-026-235-080 | | CHIP-TR,DTC114EK | A..... |
| Q | 909 | 87-A30-289-040 | | C-TR,2SA1037AK(R) | A..... |
| Q | 905 | 87-A30-301-080 | | TR,2SD1862 | A..... |
| Q | 911 | 87-A30-287-040 | | C-TR,DTC114TKA | A..... |
| Q | 912 | 87-A30-287-040 | | C-TR,DTC114TKA | A..... |
| SW | 901 | 87-A91-070-010 | | SW,TACT SKHHLV | A..... |
| SW | 904 | 87-A91-152-010 | | SW,SL 1-1-2 SSSS212-11-A | A..... |
| X | 901 | 87-A70-175-010 | | VIB,XTAL 4.5MHZ AT-49 | A..... |
| | | 8Z-KC1-614-010 | | WIRE,ANT | A..... |
| C | 101 | 87-010-197-080 | | CAP, CHIP 0.01 DM | A..... |
| C | 102 | 87-010-197-080 | | CAP, CHIP 0.01 DM | A..... |
| C | 106 | 87-010-322-080 | | C-CAP,S 100P-50 CH | A..... |
| C | 107 | 87-010-322-080 | | C-CAP,S 100P-50 CH | A..... |
| C | 103 | 87-010-322-080 | | C-CAP,S 100P-50 CH | A..... |
| C | 108 | 87-010-494-040 | | CAP,E 1-50 GAS | A..... |
| C | 109 | 87-010-494-040 | | CAP,E 1-50 GAS | A..... |
| C | 104 | 87-010-498-040 | | CAP,E 10-16 GAS | A..... |
| C | 105 | 87-010-498-040 | | CAP,E 10-16 GAS | A..... |
| C | 110 | 87-010-186-080 | | CAP,CHIP 4700P | A..... |
| C | 112 | 87-010-197-080 | | CAP, CHIP 0.01 DM | A..... |
| C | 119 | 87-010-490-040 | | CAP, ELECT 0.1-50 | A..... |
| C | 111 | 87-010-490-040 | | CAP, ELECT 0.1-50 | A..... |
| C | 113 | 87-010-495-040 | | CAP,E 2.2-50 GAS | A..... |
| C | 123 | 87-010-178-080 | | CHIP CAP 1000P | A..... |
| C | 124 | 87-010-178-080 | | CHIP CAP 1000P | A..... |
| C | 125 | 87-010-197-080 | | CAP, CHIP 0.01 DM | A..... |
| C | 121 | 87-010-220-080 | | C-CAP,S 0.018-25 B | A..... |
| C | 122 | 87-010-220-080 | | C-CAP,S 0.018-25 B | A..... |
| C | 609 | 87-010-197-080 | | CAP, CHIP 0.01 DM | A..... |
| D | 101 | 88-KC4-607-080 | | PROTECTOR, DSP-301N-A21F | A..... |
| L | 101 | 87-003-143-080 | | COIL 4.7 UH | A..... |
| L | 104 | 8Z-KT1-619-010 | | COIL,68MH K7-D | A..... |
| Q | 104 | 87-026-235-080 | | CHIP-TR,DTC114EK | A..... |
| Q | 101 | 87-026-235-080 | | CHIP-TR,DTC114EK | A..... |
| Q | 105 | 87-A30-287-040 | | C-TR,DTC114TKA | A..... |
| Q | 103 | 87-A30-289-040 | | C-TR,2SA1037AK(R) | A..... |
| Q | 102 | 87-A30-289-040 | | C-TR,2SA1037AK(R) | A..... |
| Q | 108 | 89-324-122-080 | | TR,2SC2412K | A..... |
| Q | 107 | 89-324-122-080 | | TR,2SC2412K | A..... |
| Q | 106 | 89-324-122-080 | | TR,2SC2412K | A..... |
| Q | 109 | 89-324-122-080 | | TR,2SC2412K | A..... |
| Q | 110 | 87-026-235-080 | | CHIP-TR,DTC114EK | A..... |
| SFR | 101 | 87-024-437-080 | | SFR100K,RH063EC | A..... |

ELECTRICAL MAIN PARTS LIST - 2/3

| | | | | |
|----|-----|----------------|---------------------------|--------|
| TU | 101 | 8Z-KT1-631-010 | TU UNIT, FAE347-A02 | A..... |
| C | 118 | 87-010-175-080 | CAP 560P | A..... |
| C | 115 | 87-010-315-080 | C-CAP,S 27P-50 CH | A..... |
| C | 116 | 87-010-495-040 | CAP,E 2.2-50 GAS | A..... |
| C | 114 | 87-012-149-080 | C-CAP,S 30P-50 CH | A..... |
| C | 117 | 87-012-157-080 | C-CAP,S 330P-50 CH | A..... |
| C | 120 | 87-010-196-080 | CHIP CAPACITOR,0.1-25 | A..... |
| IC | 101 | 88-KT1-607-080 | C-IC, SAA6579T | A..... |
| L | 102 | 87-003-147-080 | COIL, 22UH | A..... |
| X | 101 | 87-A70-091-010 | VIB,XTAL 4.332MHZ CSA-309 | A..... |
| C | 408 | 87-010-494-040 | CAP,E 1-50 GAS | A..... |
| C | 401 | 87-010-494-040 | CAP,E 1-50 GAS | A..... |
| C | 407 | 87-010-494-040 | CAP,E 1-50 GAS | A..... |
| C | 406 | 87-010-494-040 | CAP,E 1-50 GAS | A..... |
| C | 405 | 87-010-494-040 | CAP,E 1-50 GAS | A..... |
| C | 402 | 87-010-494-040 | CAP,E 1-50 GAS | A..... |
| C | 409 | 87-010-498-040 | CAP,E 10-16 GAS | A..... |
| C | 412 | 87-010-494-040 | CAP,E 1-50 GAS | A..... |
| C | 411 | 87-010-494-040 | CAP,E 1-50 GAS | A..... |
| C | 417 | 87-010-498-040 | CAP,E 10-16 GAS | A..... |
| C | 419 | 87-010-498-040 | CAP,E 10-16 GAS | A..... |
| C | 413 | 87-010-498-040 | CAP,E 10-16 GAS | A..... |
| C | 414 | 87-010-498-040 | CAP,E 10-16 GAS | A..... |
| C | 418 | 87-010-498-040 | CAP,E 10-16 GAS | A..... |
| C | 410 | 87-010-498-040 | CAP,E 10-16 GAS | A..... |
| C | 415 | 87-010-498-040 | CAP,E 10-16 GAS | A..... |
| C | 416 | 87-010-498-040 | CAP,E 10-16 GAS | A..... |
| C | 421 | 87-010-494-040 | CAP,E 1-50 GAS | A..... |
| C | 423 | 87-010-494-040 | CAP,E 1-50 GAS | A..... |
| C | 422 | 87-010-494-040 | CAP,E 1-50 GAS | A..... |
| C | 424 | 87-010-494-040 | CAP,E 1-50 GAS | A..... |
| C | 429 | 87-010-498-040 | CAP,E 10-16 GAS | A..... |
| C | 420 | 87-010-555-040 | CAP,E 100-10 GAS | A..... |
| C | 428 | 87-012-140-080 | CAP 470P | A..... |
| C | 427 | 87-012-140-080 | CAP 470P | A..... |
| C | 426 | 87-012-140-080 | CAP 470P | A..... |
| C | 425 | 87-012-140-080 | CAP 470P | A..... |
| C | 432 | 87-010-184-080 | CHIP CAPACITOR 3300P(K) | A..... |
| C | 431 | 87-010-184-080 | CHIP CAPACITOR 3300P(K) | A..... |
| C | 439 | 87-010-196-080 | CHIP CAPACITOR,0.1-25 | A..... |
| C | 434 | 87-010-198-080 | CAP, CHIP 0.022 | A..... |
| C | 433 | 87-010-198-080 | CAP, CHIP 0.022 | A..... |
| C | 430 | 87-010-498-040 | CAP,E 10-16 GAS | A..... |
| C | 435 | 87-A11-177-080 | C-CAP,S 0.15-16 K B | A..... |
| C | 437 | 87-A11-177-080 | C-CAP,S 0.15-16 K B | A..... |
| C | 438 | 87-A11-177-080 | C-CAP,S 0.15-16 K B | A..... |
| C | 436 | 87-A11-177-080 | C-CAP,S 0.15-16 K B | A..... |
| C | 440 | 87-010-491-040 | CAP,E 0.22-50 GAS | A..... |
| C | 441 | 87-010-491-040 | CAP,E 0.22-50 GAS | A..... |
| IC | 401 | 8Z-KT1-622-010 | C-IC, LC75374E | A..... |
| Q | 401 | 87-A30-279-040 | C-TR, DTC314TK | A..... |
| Q | 402 | 87-A30-279-040 | C-TR, DTC314TK | A..... |
| Q | 403 | 87-A30-279-040 | C-TR, DTC314TK | A..... |
| Q | 404 | 87-A30-279-040 | C-TR, DTC314TK | A..... |
| Q | 405 | 87-A30-287-040 | C-TR, DTC114TKA | A..... |
| Q | 406 | 87-A30-287-040 | C-TR, DTC114TKA | A..... |
| C | 555 | 87-010-178-080 | CHIP CAP 1000P | A..... |
| C | 558 | 87-010-178-080 | CHIP CAP 1000P | A..... |
| C | 557 | 87-010-178-080 | CHIP CAP 1000P | A..... |
| C | 556 | 87-010-178-080 | CHIP CAP 1000P | A..... |
| C | 551 | 87-010-494-040 | CAP,E 1-50 GAS | A..... |
| C | 554 | 87-010-494-040 | CAP,E 1-50 GAS | A..... |
| C | 553 | 87-010-494-040 | CAP,E 1-50 GAS | A..... |
| C | 552 | 87-010-494-040 | CAP,E 1-50 GAS | A..... |
| C | 559 | 87-010-498-040 | CAP,E 10-16 GAS | A..... |
| C | 563 | 87-010-497-040 | CAP,E 4.7-35 GAS | A..... |
| IC | 560 | 8Z-KC1-630-090 | CAP,E 3300U-16 M 105 EX | A..... |
| IC | 551 | 87-A20-876-010 | IC, HA13158 | A..... |
| C | 854 | 87-010-178-080 | CHIP CAP 1000P | A..... |
| C | 859 | 87-010-178-080 | CHIP CAP 1000P | A..... |
| C | 856 | 87-010-178-080 | CHIP CAP 1000P | A..... |
| C | 858 | 87-010-178-080 | CHIP CAP 1000P | A..... |
| C | 855 | 87-010-178-080 | CHIP CAP 1000P | A..... |
| C | 853 | 87-010-178-080 | CHIP CAP 1000P | A..... |
| C | 857 | 87-010-178-080 | CHIP CAP 1000P | A..... |
| C | 852 | 87-010-182-080 | C-CAP,S 2200P-50 B | A..... |
| C | 851 | 87-016-669-080 | C-CAP,S 0.1-25 K B | A..... |
| C | 860 | 87-010-178-080 | CHIP CAP 1000P | A..... |
| C | 866 | 87-010-194-080 | CAP, CHIP 0.047 | A..... |
| C | 861 | 87-010-198-080 | CAP, CHIP 0.022 | A..... |
| C | 867 | 87-010-237-080 | CAP, ELECT 1000-16V | A..... |
| C | 864 | 87-010-498-040 | CAP,E 10-16 GAS | A..... |
| C | 868 | 87-010-555-040 | CAP,E 100-10 GAS | A..... |
| C | 865 | 87-010-555-040 | CAP,E 100-10 GAS | A..... |
| C | 869 | 87-010-555-040 | CAP,E 100-10 GAS | A..... |
| C | 871 | 87-010-182-080 | C-CAP,S 2200P-50 B | A..... |
| C | 870 | 87-010-555-040 | CAP,E 100-10 GAS | A..... |
| C | 880 | 87-010-182-080 | C-CAP,S 2200P-50 B | A..... |
| C | 998 | 87-016-669-080 | C-CAP,S 0.1-25 K B | A..... |
| D | 851 | 87-001-783-080 | DIODE, 1N4002 | A..... |
| D | 852 | 87-001-783-080 | DIODE, 1N4002 | A..... |
| D | 855 | 87-017-932-080 | ZENER, MTJ6.2B | A..... |

ELECTRICAL MAIN PARTS LIST - 3/3

| | | | | |
|-----|-----|----------------|----------------------------|--------|
| D | 858 | 87-020-465-080 | DIODE,1SS133 (110MA) | A..... |
| D | 856 | 87-A40-189-080 | DIODE,1SR139-400 | A..... |
| D | 857 | 87-A40-189-080 | DIODE,1SR139-400 | A..... |
| D | 859 | 87-A40-523-080 | ZENER,MTZJ9.1B | A..... |
| D | 853 | 87-A40-523-080 | ZENER,MTZJ9.1B | A..... |
| D | 854 | 87-A40-624-080 | ZENER,MTZJ10A | A..... |
| D | 860 | 87-070-136-080 | ZENER,MTZJ5.1B | A..... |
| D | 861 | 87-A40-189-080 | DIODE,1SR139-400 | A..... |
| L | 801 | 8Z-KT1-615-010 | FLTR,AMORPHOUS -CHOKE | A..... |
| L | 852 | 87-003-149-080 | COIL,47UH | A..... |
| Q | 852 | 87-026-235-080 | CHIP-TR,DTC114EK | A..... |
| Q | 857 | 87-026-235-080 | CHIP-TR,DTC114EK | A..... |
| Q | 854 | 87-026-235-080 | CHIP-TR,DTC114EK | A..... |
| Q | 856 | 87-A30-289-040 | C-TR,2SA1037AK(R) | A..... |
| Q | 858 | 87-A30-298-080 | TR,2SD2396 | A..... |
| Q | 853 | 87-A30-299-080 | TR,2SB1326 | A..... |
| Q | 851 | 87-A30-300-080 | TR,2SB1277 | A..... |
| Q | 859 | 87-A30-302-040 | C-TR,2SD1758-F5 | A..... |
| Q | 855 | 87-A30-302-040 | C-TR,2SD1758-F5 | A..... |
| Q | 865 | 87-026-235-080 | CHIP-TR,DTC114EK | A..... |
| Q | 864 | 87-A30-289-040 | C-TR,2SA1037AK(R) | A..... |
| Q | 862 | 87-A30-298-080 | TR,2SD2396 | A..... |
| Q | 860 | 89-211-323-080 | C-TR,2SB1132R | A..... |
| Q | 863 | 89-324-122-080 | TR,2SC2412K | A..... |
| ANT | 101 | 8Z-KT1-614-010 | ANT,AW-002 | A..... |
| CNA | 851 | 8Z-KT1-620-010 | CONN ASSY,8P ISO-BLACK | A..... |
| CNA | 852 | 8Z-KT1-621-010 | CONN ASSY,8P ISO-WHITE | A..... |
| CON | 901 | 87-A60-861-080 | C-CONN,20P 08-6224-020-001 | A..... |
| J | 751 | 88-KTA-604-010 | JACK,PIN 4P V-TYPE | A..... |
| C | 808 | 87-010-154-080 | CAP CHIP 10P | A..... |
| C | 801 | 87-010-176-080 | C-CAP,S 680P-50 SL | A..... |
| C | 807 | 87-010-178-080 | CHIP CAP 1000P | A..... |
| C | 803 | 87-010-194-080 | CAP, CHIP 0.047 | A..... |
| C | 804 | 87-010-194-080 | CAP, CHIP 0.047 | A..... |
| C | 802 | 87-010-196-080 | CHIP CAPACITOR,0.1-25 | A..... |
| C | 805 | 87-010-196-080 | CHIP CAPACITOR,0.1-25 | A..... |
| D | 805 | 87-020-585-080 | CHIP-ZENER,02CZ6.2Y | A..... |
| D | 808 | 87-020-585-080 | CHIP-ZENER,02CZ6.2Y | A..... |
| D | 809 | 87-020-585-080 | CHIP-ZENER,02CZ6.2Y | A..... |
| D | 803 | 87-020-585-080 | CHIP-ZENER,02CZ6.2Y | A..... |
| D | 802 | 87-020-585-080 | CHIP-ZENER,02CZ6.2Y | A..... |
| D | 807 | 87-020-585-080 | CHIP-ZENER,02CZ6.2Y | A..... |
| D | 801 | 87-020-585-080 | CHIP-ZENER,02CZ6.2Y | A..... |
| D | 804 | 87-020-585-080 | CHIP-ZENER,02CZ6.2Y | A..... |
| D | 810 | 87-020-585-080 | CHIP-ZENER,02CZ6.2Y | A..... |
| D | 811 | 87-020-585-080 | CHIP-ZENER,02CZ6.2Y | A..... |
| D | 812 | 87-020-585-080 | CHIP-ZENER,02CZ6.2Y | A..... |
| IC | 802 | 87-A90-951-010 | RCR UNIT,SBX1971-52 | A..... |
| IC | 801 | 88-KT1-608-010 | C-IC,LC75854W | A..... |
| J | 451 | 87-A60-249-010 | JACK,MOJ-B32 | A..... |
| LCD | 801 | 8Z-KC2-606-010 | LCD,ZKC-2 | A..... |
| PL | 804 | 8Z-KT1-641-010 | LAMP,T-3 | A..... |
| PL | 806 | 8Z-KT1-641-010 | LAMP,T-3 | A..... |
| PL | 802 | 8Z-KT1-641-010 | LAMP,T-3 | A..... |
| PL | 807 | 8Z-KT1-641-010 | LAMP,T-3 | A..... |
| PL | 801 | 8Z-KT1-641-010 | LAMP,T-3 | A..... |
| PL | 803 | 8Z-KT1-641-010 | LAMP,T-3 | A..... |
| PL | 805 | 8Z-KT1-641-010 | LAMP,T-3 | A..... |
| PL | 808 | 8Z-KT1-641-010 | LAMP,T-3 | A..... |
| S | 801 | 87-A90-001-080 | C-SW,TACT SKQMAL | A..... |
| S | 811 | 87-A90-001-080 | C-SW,TACT SKQMAL | A..... |
| S | 816 | 87-A90-001-080 | C-SW,TACT SKQMAL | A..... |
| S | 819 | 87-A90-001-080 | C-SW,TACT SKQMAL | A..... |
| S | 821 | 87-A90-001-080 | C-SW,TACT SKQMAL | A..... |
| S | 820 | 87-A90-001-080 | C-SW,TACT SKQMAL | A..... |
| SW | 809 | 87-A91-159-010 | SW,TACT SKHLAD | A..... |
| SW | 807 | 87-A91-159-010 | SW,TACT SKHLAD | A..... |
| SW | 803 | 87-A91-159-010 | SW,TACT SKHLAD | A..... |
| SW | 808 | 87-A91-159-010 | SW,TACT SKHLAD | A..... |
| SW | 805 | 87-A91-159-010 | SW,TACT SKHLAD | A..... |
| SW | 804 | 87-A91-159-010 | SW,TACT SKHLAD | A..... |
| SW | 806 | 87-A91-159-010 | SW,TACT SKHLAD | A..... |
| SW | 802 | 87-A91-159-010 | SW,TACT SKHLAD | A..... |
| SW | 810 | 87-A91-159-010 | SW,TACT SKHLAD | A..... |
| SW | 815 | 87-A91-159-010 | SW,TACT SKHLAD | A..... |
| SW | 817 | 87-A91-159-010 | SW,TACT SKHLAD | A..... |
| SW | 813 | 87-A91-159-010 | SW,TACT SKHLAD | A..... |
| SW | 812 | 87-A91-159-010 | SW,TACT SKHLAD | A..... |
| SW | 814 | 87-A91-159-010 | SW,TACT SKHLAD | A..... |
| SW | 818 | 87-A91-159-010 | SW,TACT SKHLAD | A..... |
| SW | 822 | 87-A91-159-010 | SW,TACT SKHLAD | A..... |

MECHANICAL PARTS LIST - 1/1

NOTE: The characters in the suffix column indicate the part usage.

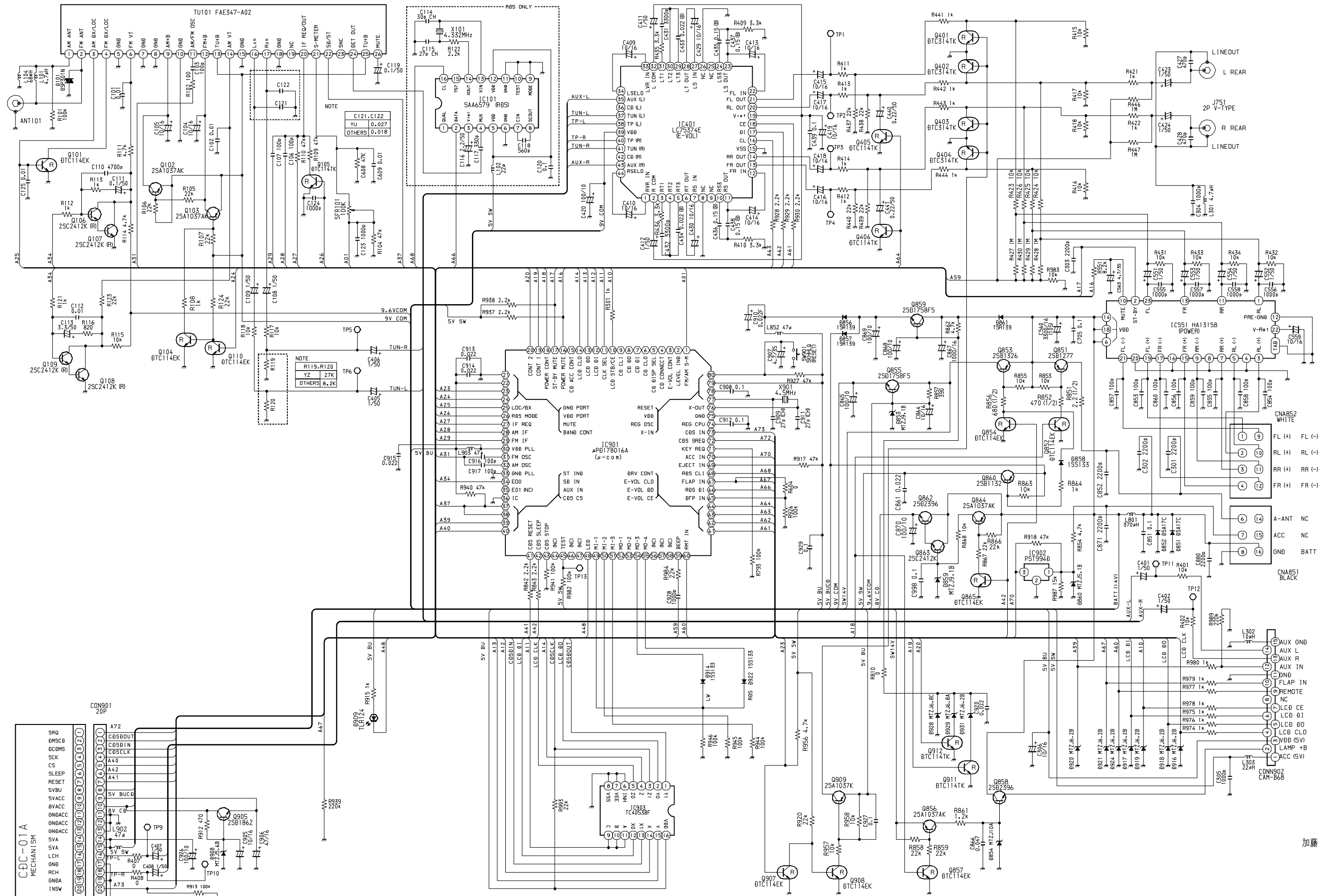
| YZSF | REF.NO | PARTS NO. | XX KANRI NO. | DESCRIPTION | A | SUFFIX |
|------|----------------|-----------|--------------------|--------------------------------|---|--------|
| | 8Z-KC2-001-010 | | | CABI,FRONT -C2 | A | |
| | 8Z-KC2-002-010 | | | CABI,REAR -C2 | A | |
| | 8Z-KC2-011-010 | | | CABI,BASE -C2 | A | |
| | 8Z-KC2-012-010 | | | CABI,TRIM -C2 | A | |
| | 8Z-KC3-001-010 | | | WINDOW,LCD NH-C3 | A | |
| | 8Z-KC3-003-010 | | | RING,OVAL T-C | A | |
| | 8Z-KC1-006-010 | | | BTN,P.SET -C | A | |
| | 8Z-KC1-007-010 | | | BTN,+/- -C | A | |
| | 8Z-KC1-008-010 | | | BTN,SEL -C | A | |
| | 8Z-KC1-010-010 | | | BTN,H-BASS -C | A | |
| | 8Z-KC1-011-010 | | | BTN,U/D -C | A | |
| | 8Z-KC1-012-010 | | | BTN,DRV -C | A | |
| | 8Z-KC1-014-010 | | | BTN,TETRA -C | A | |
| | 8Z-KC1-015-010 | | | BTN,TA -C | A | |
| | 8Z-KC2-004-010 | | | BTN,PWR -C2 | A | |
| | 8Z-KC2-005-010 | | | BTN,EJ -C2 | A | |
| | 8Z-KC2-006-010 | | | BTN,CD -C2 | A | |
| | 8Z-KC2-008-010 | | | BTN,DETACH -C2 | A | |
| | 8Z-KC1-209-010 | | | LENS,IR -C | A | |
| | 8Z-KC1-211-010 | | | COVER, TOP -C | A | |
| | 8Z-KC1-212-010 | | | COVER, BOTTOM -C | A | |
| | 8Z-KC1-213-010 | | | CHAS,SIDE L -C | A | |
| | 8Z-KC1-214-010 | | | CHAS,SIDE R -C | A | |
| | 8Z-KC1-215-010 | | | HLDR,P-IC -C | A | |
| | 8Z-KC1-216-010 | | | HLDR,DECK CDC-01 | A | |
| | 8Z-KC1-219-010 | | | HLDR,TR -C | A | |
| | 8Z-KC1-249-010 | | | COVER, DUST F-C | A | |
| | 8Z-KC1-255-010 | | | HLDR,TR -CA | A | |
| | 8Z-KC1-257-010 | | | HLDR,ISO-WIRE -C | A | |
| | 8Z-KC2-201-010 | | | CHAS,FRONT -C2 | A | |
| | 8Z-KC2-202-010 | | | HLDR,LCD -C2 | A | |
| | 8Z-KC2-203-010 | | | LEVER,DFP HOOK -C2 | A | |
| | 8Z-KC2-204-010 | | | LEVER,DFP LOCK -C2 | A | |
| | 8Z-KC2-205-010 | | | PLATE,CD ENT. | A | |
| | 8Z-KC2-211-010 | | | CASE,LCD LENS -C2 | A | |
| | 8Z-KC2-212-010 | | | LENS,LCD -C2 | A | |
| | 8Z-KC2-213-010 | | | LENS,L -C2 | A | |
| | 8Z-KC2-214-010 | | | LENS,R -C2 | A | |
| | 8Z-KC2-217-010 | | | HLDR,JACK -C2 | A | |
| | 8Z-KC2-221-110 | | | SPR-C,DETACH HOOK-C2 | A | |
| | 8Z-KC2-222-010 | | | SPR-T,DETACH LOCK-C2 | A | |
| | 8Z-KC2-223-010 | | | SPR-C,DETACH -C2 | A | |
| | 8Z-KC3-201-010 | | | COVER, CD BLIND -C | A | |
| | 8Z-KT1-236-010 | | | CAP,LAMP BLU | A | |
| | 8Z-KT1-237-010 | | | CAP,LAMP GRN | A | |
| | 87-251-073-410 | | | SCREW,U+2.6-6 | A | |
| | 87-251-075-410 | | | U+2.6-10 | A | |
| | 87-251-096-410 | | | U+3-10 | A | |
| | 87-432-903-010 | | | WASHER,WTE 2.6 | A | |
| | 87-B10-216-010 | | | U+2.6-4.0 ZINC BLK (BH M2.6) | A | |
| | 87-B10-259-010 | | | UT2+3.0-10.0 W/O SLOT (BH TAP) | A | |
| | 8Z-KC1-251-010 | | | S-SCREW,TH2.6-4.0-0.8 | A | |
| | 8Z-KC1-254-010 | | | S-SCREW,PT 2*5 BH+ BLK | A | |
| | 8Z-KC2-220-010 | | | S-SCREW,PT 2*10 BH+ BLK | A | |
| | 8Z-KC1-614-010 | | | WIRE,ANT | A | |

ACCESSORIES / PACKAGE LIST - 1/1

NOTE: The characters in the suffix column indicate the part usage.

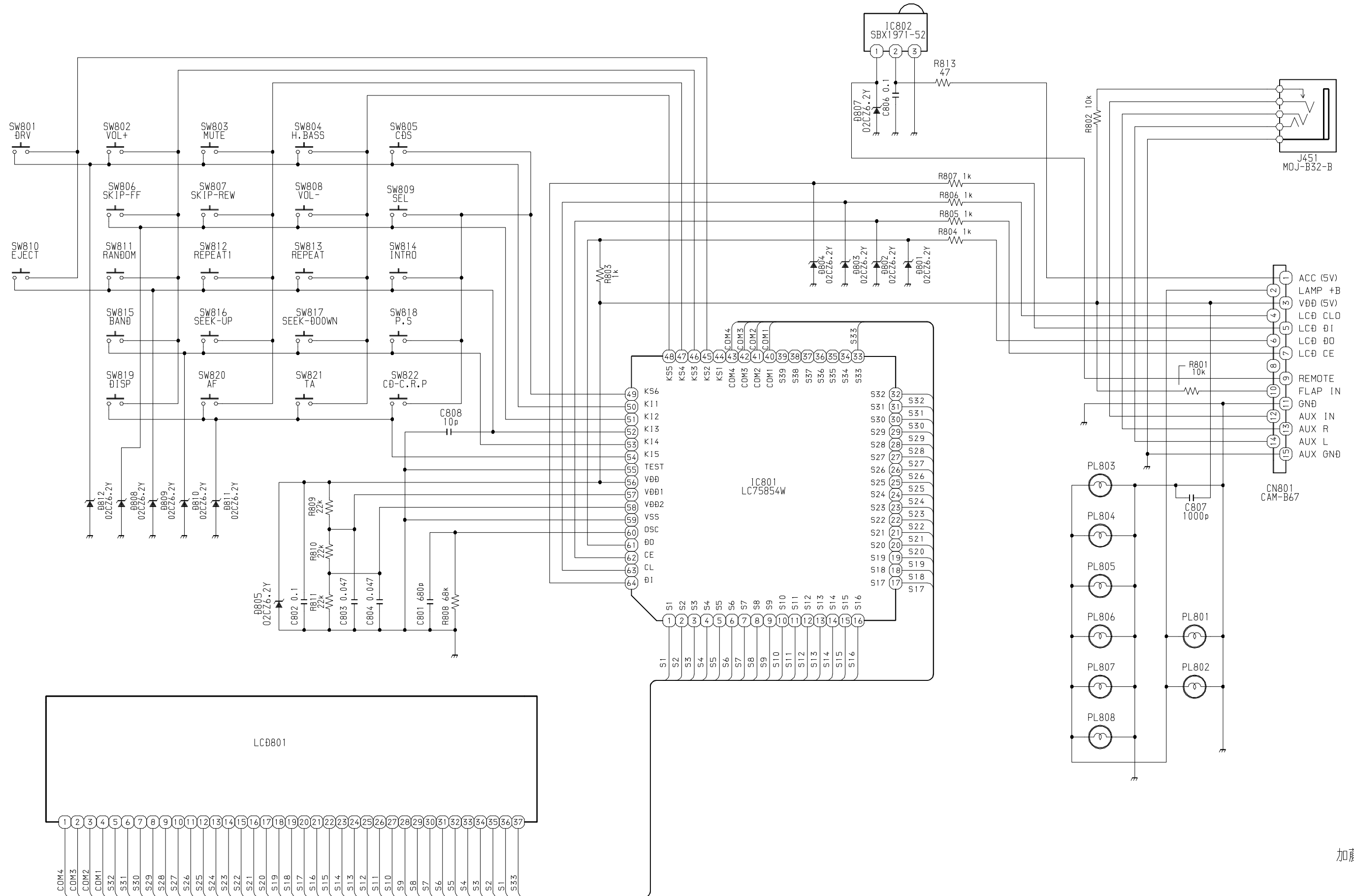
| YZSF | XX..... | A..... | | |
|------------|----------------|-----------|--------------------------------|--------|
| REF.NO | PARTS NO. | KANRI NO. | DESCRIPTION | SUFFIX |
| | 8Z-KC2-901-010 | | IB, YZ(9L) R146,136 | A..... |
| | 8Z-KC2-902-010 | | IB, INST, YZ (6L)R146,136 | A..... |
| | 8Z-KC2-903-010 | | IB, INST, YZ (CZ-PO-H)R146,136 | A..... |
| | 87-B10-141-010 | | NUT, 5 TYPE-2 | A..... |
| | 87-B10-143-010 | | UT1+5-15 W/O SLOT | A..... |
| | 87-B10-144-010 | | W, 5.2-10-0.5 | A..... |
| | 87-B10-145-010 | | W-SPR, 5.3-8.5-1.5 | A..... |
| | 87-B10-216-010 | | U+2.6-4.0 ZINC BLK (BH M2.6) | A..... |
| | 8Z-KC1-030-010 | | CASE, DFP -C | A..... |
| | 8Z-KC1-231-010 | | HLDR, HALF -C | A..... |
| | 8Z-KC1-232-010 | | KEY, REMOVE -C | A..... |
| | 8Z-KC1-235-010 | | HLDR, REAR MTG | A..... |
| | 8Z-KC1-244-010 | | S-SCREW, 5*6 TH+ TAPPING ST | A..... |
| | 8Z-KC1-250-010 | | S-SCREW, HEXAGON | A..... |

SCHEMATIC DIAGRAM - 1 (MAIN)



加藤

SCHEMATIC DIAGRAM – 2 (FRONT)



| サービス技術ニュース | |
|------------|------|
| 番号 | 連絡内容 |
| G- - | |
| G- - | |
| G- - | |

アイワ株式会社
AIWA CO.,LTD.

9620450

Tokyo Japan