

# aiwa



CT-X218  
CT-X258  
CT-X458

---

STEREO CAR CASSETTE  
RECEIVER

---

• BASIC TAPE MECHANISM: CDS-36SCH-94

• TYPE: YJ

**SIMPLE MANUAL**

Replace this Service Manual with "Revision Publishing" when it is issued.

S/M Code No. 09-98B-301-4T1

MANUAL  
SERVICE

# ELECTRICAL MAIN PARTS LIST

DESCRIPTIONで判断できない物は "REFERENCE NAME LIST" を参照してください。  
 If can't understand for Description please kindly refer to "REFERENCE NAME LIST".

REF. NO	PART NO.	KANRI NO.	DESCRIPTION	REF. NO	PART NO.	KANRI NO.	DESCRIPTION
IC				C504	87-010-053-080		CAP,E 1-50V
	S3-320-622-564	IC,KIA6225S		C509	87-010-866-010		CAP,E 10UF-63V
	S3-375-373-E16	IC,LC75373E		C510	87-010-377-010		CAP,E 3300UF-16V
	87-A20-599-010	IC,HA13154A<258,218>		C602	87-015-682-040		CAP,E 22-16V
	87-A20-876-010	IC,HA13158<458>		C603	87-010-248-040		CAP,E 220-10V
	S3-350-994-D84	IC,PST994D		C604	87-010-112-040		CAP,E 100-16V
	S3-32B-A09-T18	IC,BA09T		C605	87-010-553-080		CAP,E 47-16V
	87-A20-877-010	IC,TC9321F-015		C606	87-010-555-010		CAP,E 100-10V
	S3-339-297-F14	IC,TC9297F		C633	87-010-553-080		CAP,E 47-16V
				C702	87-010-555-010		CAP,E 100-10V
TRANSISTOR				C751	87-010-553-080		CAP,E 47-16V
	87-026-464-080	TR,DTC114TS		C752	87-015-698-080		CAP,E 4.7-50V
	87-026-610-080	TR,KTC3198-Y		C753	87-010-053-080		CAP,E 1-50V
	S1-71H-003-E00	TR,KTA1267Y		C831	87-010-053-080		CAP,E 1-50V
	87-026-311-080	TR,DTB123YS		C832	87-010-053-080		CAP,E 1-50V
	S3-147-320-325	TR,KTC3203Y		CON231	S6-040-825-5NT		CONN,8P 2.5 PITCH WAFER
	S3-1KT-A16-58Y	TR,KTA1658Y		CON831	S6-051-5B6-8M1		CONN,15P DET
	S3-1KT-C43-69Y	TR,KTC4369Y		D701	S3-051-012-400		LED,LAMP 3MM(RED)
	87-026-572-080	TR,DTA114TS		J101	S8-48K-T67-900		ANT,SOCKET
	S3-1DT-C36-3TS	TR,DTC363TS		J451	S6-1DA-E24-2V5		JACK,RCA 2P
DIODE				L101	87-003-143-080		COIL,4.7UH 2X4MM
	87-020-465-080	DIODE,1SS133VR=35V		L701	87-003-149-080		COIL,47UH
	87-001-783-080	DIODE,1N4002		L702	87-003-383-010		COIL,1UH
	87-070-334-010	ZENER,MTZ10B		L731	87-003-149-080		COIL,47UH
	87-070-136-080	ZENER,5.1V		SW901	S4-1SK-Y12-002		SW,SLIDE MINI 1P2T
	87-017-932-080	ZENER,MTZJ6.2B		TUN101	S0-3FA-E34-001		TUNER PACK FAE340-A02
	S3-040-806-2UD	C-ZENER,DIODE (SMD TYPE)		X701	S3-772-000-013		X'TAL,7.2 MHZ
	87-017-779-080	DIODE,1SS355		FRONT C.B			
MAIN C.B				CON801	S6-051-5B6-7M1		CONN,15P DET
C105	87-010-553-080	CAP,E 47-16V		LCD801	S3-580-08K-TKA		LCD,DISPLAY
C107	87-010-495-040	CAP,E 2.2-50V		PL801	S3-6X8-KT1-006		LAMP CAP BLUE
C108	87-010-553-080	CAP,E 47-16V		PL801	S8-790-653-602		PILOT LAMP 9V 60MA
C109	87-010-053-080	CAP,E 1-50V		PL802	S3-6X8-KT1-006		LAMP CAP BLUE
C110	87-010-053-080	CAP,E 1-50V		PL802	S8-790-653-602		PILOT LAMP 9V 60MA
C115	87-010-053-080	CAP,E 1-50V		PL803	S3-6X6-KT1-000		LAMP CAP GREEN
C116	87-010-053-080	CAP,E 1-50V		PL803	S8-790-653-602		PILOT LAMP 9V 60MA
C118	87-010-553-080	CAP,E 47-16V		PL804	S3-6X6-KT1-000		LAMP CAP GREEN
C203	87-010-378-040	CAP,E 10-16V		PL804	S8-790-653-602		PILOT LAMP 9V 60MA
C204	87-010-378-040	CAP,E 10-16V		PL806	S3-6X6-KT1-000		LAMP CAP GREEN
C205	87-010-555-010	CAP,E 100-10V		PL806	S8-790-653-602		PILOT LAMP 9V 60MA
C206	87-010-555-010	CAP,E 100-10V		PL807	S3-6X6-KT1-000		LAMP CAP GREEN
C209	87-010-053-080	CAP,E 1-50V		PL807	S8-790-653-602		PILOT LAMP 9V 60MA
C210	87-010-053-080	CAP,E 1-50V		PL808	S3-6X6-KT1-000		LAMP CAP GREEN
C211	87-010-555-010	CAP,E 100-10V		PL808	S8-790-653-602		PILOT LAMP 9V 60MA
C231	87-010-553-080	CAP,E 47-16V		SW801	S4-711-015-0K1		SW,TACT 2PINS
C301	87-010-553-080	CAP,E 47-16V		SW802	S4-711-015-0K1		SW,TACT 2PINS
C303	87-010-053-080	CAP,E 1-50V		SW803	S4-711-015-0K1		SW,TACT 2PINS
C304	87-010-053-080	CAP,E 1-50V		SW804	S4-711-015-0K1		SW,TACT 2PINS
C305	87-010-378-040	CAP,E 10-16V		SW805	S4-711-015-0K1		SW,TACT 2PINS
C306	87-010-378-040	CAP,E 10-16V		SW806	S4-711-015-0K1		SW,TACT 2PINS
C311	87-010-378-040	CAP,E 10-16V		SW807	S4-711-015-0K1		SW,TACT 2PINS
C312	87-010-378-040	CAP,E 10-16V		SW808	S4-711-015-0K1		SW,TACT 2PINS
C317	87-010-378-040	CAP,E 10-16V		SW809	S4-711-015-0K1		SW,TACT 2PINS
C318	87-010-378-040	CAP,E 10-16V		SW810	S4-711-0S5-0K1		SW,SMD TACT 2PIN
C319	87-010-053-080	CAP,E 1-50V		SW811	S4-711-0S5-0K1		SW,SMD TACT 2PIN
C320	87-010-053-080	CAP,E 1-50V		SW812	S4-711-015-0K1		SW,TACT 2PINS
C321	87-010-053-080	CAP,E 1-50V		SW813	S4-711-0S5-0K1		SW,SMD TACT 2PIN
C322	87-010-053-080	CAP,E 1-50V		SW814	S4-711-015-0K1		SW,TACT 2PINS
C324	87-010-553-080	CAP,E 47-16V		SW815	S4-711-015-0K1		SW,TACT 2PINS
C457	87-010-053-080	CAP,E 1-50V		SW816	S4-711-015-0K1		SW,TACT 2PINS
C458	87-010-053-080	CAP,E 1-50V		SW817	S4-711-015-0K1		SW,TACT 2PINS
C501	87-010-053-080	CAP,E 1-50V		SW818	S4-711-015-0K1		SW,TACT 2PINS
C502	87-010-053-080	CAP,E 1-50V		SW819	S4-711-015-0K1		SW,TACT 2PINS
C503	87-010-053-080	CAP,E 1-50V		SW820	S4-711-015-0K1		SW,TACT 2PINS
				JACK C.B			

REF. NO	PART NO.	KANRI NO.	DESCRIPTION
J801	S6-1M0-JB3-2B0		JACK, AUX

REF. NO	PART NO.	KANRI NO.	DESCRIPTION
---------	----------	-----------	-------------

HEAD C.B

SW C.B

## ACCESSORIES LIST

DESCRIPTIONで判断できない物は "REFERENCE NAME LIST" を参照してください。  
If can't understand for Description please kindly refer to "REFERENCE NAME LIST".

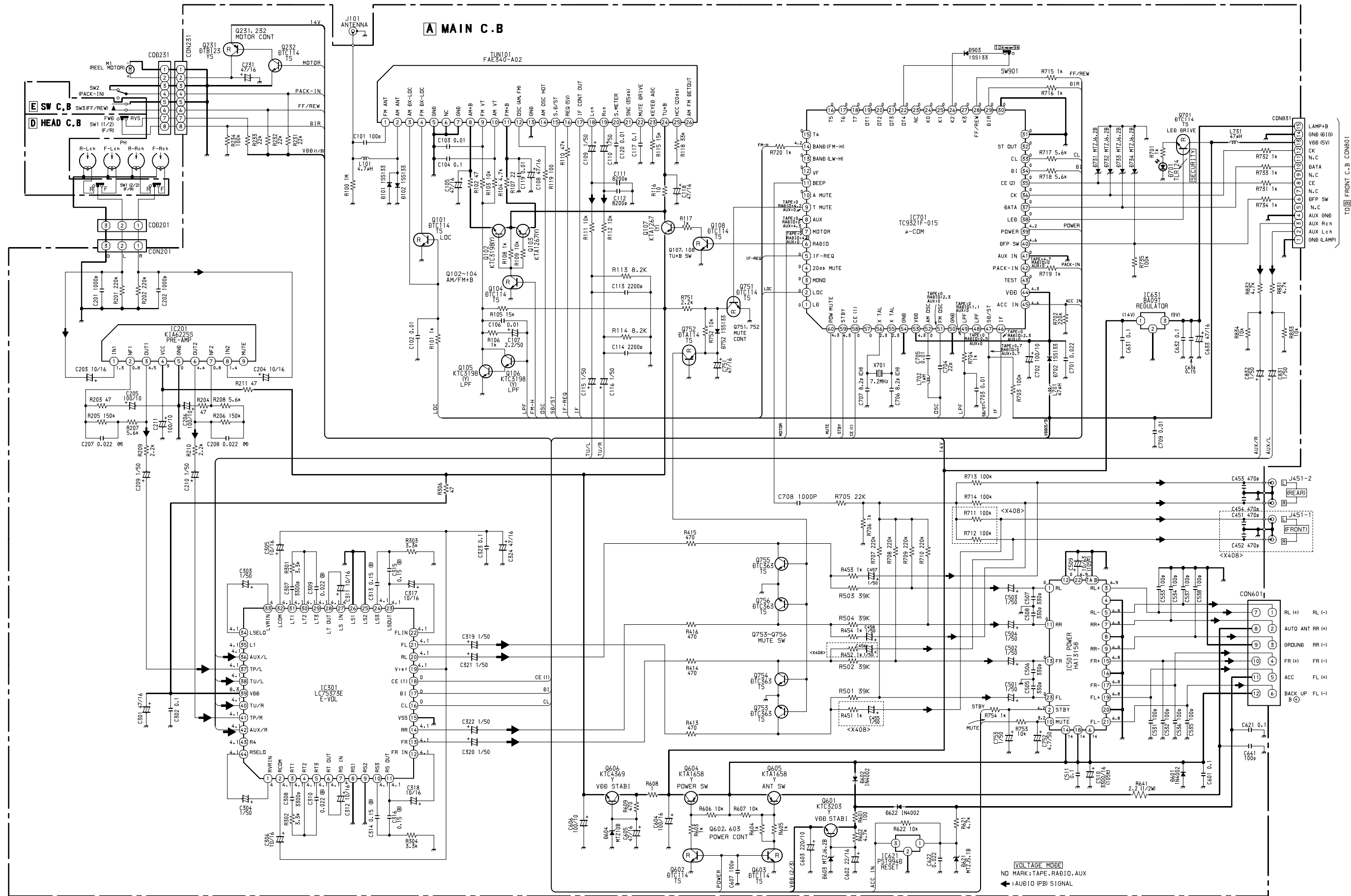
REF. NO	PART NO.	KANRI NO.	DESCRIPTION
1	S7-0X8-147-201	IB<218>	
1	S7-0X8-147-201	IB<258>	
1	S7-0X8-147-201	IB<458>	
2	S2-2X8-KT2-000	KEY, RELEASE	
3	S2-2X5-KT4-000	REAR MOUNTING BRACKET	
4	S0-9X6-KT1-000	CASE, PANEL	
5	S2-050-654-091	NUT, 5M	
6	S1-850-031-520	SCREW, ST5-15	
7	S3-309-005-203	SPR, WASHER M5	
8	S0-650-651-014	SCREW, 10-M5-10	
9	S3-410-005-003	WASHER PLANE 10-5-0.5	
10	S6-7E0-800-000	SPK 6.5 4<258, 458>	

# MECHANICAL PARTS LIST 1/1

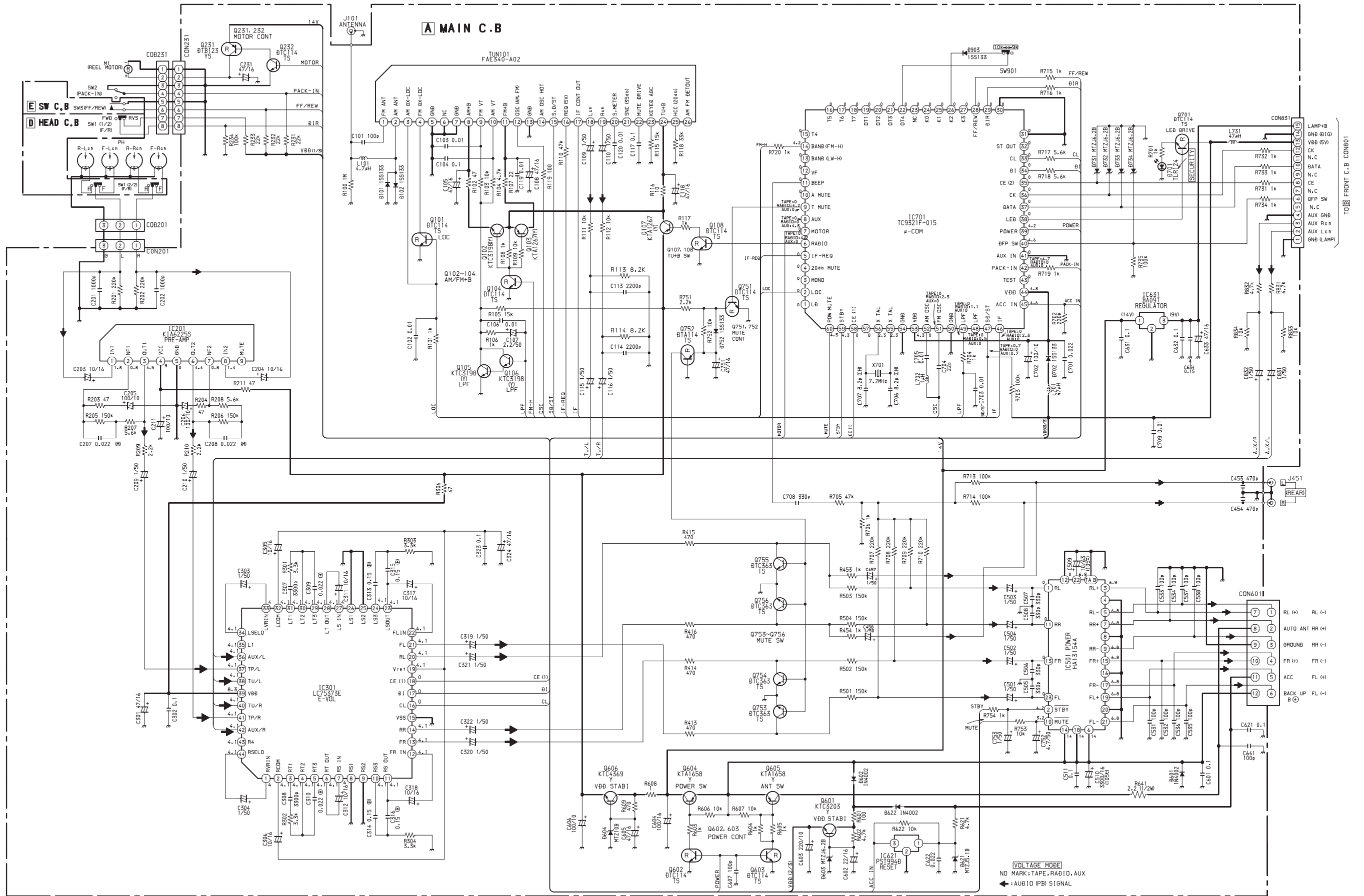
DESCRIPTIONで判断できない物は "REFERENCE NAME LIST" を参照してください。  
 If can't understand for Description please kindly refer to "REFERENCE NAME LIST".

REF. NO	PART NO.	KANRI NO.	DESCRIPTION	REF. NO	PART NO.	KANRI NO.	DESCRIPTION
1	S2-9X8-KT5-001		RING,TUNE HRABS	24	S9-58X-8KT-100		BTN-PWR/BAS
2	S5-8X8-KT7-001		BTN-HRABS OVAL CD	25	S9-0X8-KT1-000		LENS,MAIN
3	S6-0X8-KT1-002		LCD WIN-PC CLEAR SPY<458>	26	S0-2X8-KT1-000		REAR PANEL HRABS
3	S6-0X8-KT1-006		LCD WIN-PC CLEAR SPY<218>	27	S5-8X8-KT1-001		CASE LCD
3	S6-0X8-KT1-007		LCD WIN-PC CLEAR SPY<258>	28	S9-0X8-KT2-000		LENS,LCD
4	S5-8X8-KT8-001		BTN-HRABS J-WHITE SPY SILVER(T <258,218>	29	S6-8X8-KT1-000		LENS,HOLDER
4	88-KTA-012-010		BTN-HRABS U/D<458>	30	S1-9X8-KT1-001		TRIM HRABS DARK
5	88-KTD-006-010		BTN-HRABS DISP<458>	31	S2-2X8-KT1-000		HOLDER HALF
5	S5-8X8-KTA-001		BTN-HRABS J-WHITE SPY SILVER(T <258,218>	32	S3-0X8-KT1-000		BASE HRABS
6	S5-8X8-KTB-001		BTN-HRABS J-WHITE SPY SILVER(T <258,218>	33	S1-1X8-KT1-003		DOOR,TAPE
6	88-KT3-004-010		BTN-HRABS LO<458>	34	S7-1C8-181-000		SPR,DOOR
7	88-KTA-013-010		BTN-HRABS CAP,AME<458>	35	S2-9X8-KT2-000		STOPPER DFP A
7	S5-8X8-KT9-001		BTN-HRABS J-WHITE SPY SILVER(T <258,218>	36	S7-1X8-KT1-000		SPR-T,P-UP
8	S5-8X8-KT6-001		BTN-HRABS PRESET 5/6	37	S2-9X8-KT1-000		STOPPER DFP
9	S5-8X8-KT5-001		BTN-HRABS PRESET 3/4	38	S7-7X6-KT3-000		SPR,E P-UP SWPB
10	S5-8X8-KT4-001		BTN-HRABS PRESET 1/2	39	S2-8X8-KT4-000		BASE LOCK
11	S5-8X8-KT3-001		BTN-HRABS SEL	40	S2-9X8-KT3-000		JOINT DFP L
12	S5-8X8-KT2-001		BTN-HRABS +/-	41	S2-9X8-KT4-000		JOINT DFP R
13	S8-6X5-KT1-101		BADGE(AIWA LOGO)<258,218>	42	S9-1X8-KT1-000		COVER,TOP<258,218>
13	87-054-089-010		BADGE(AIWA LOGO)<458>	A	87-067-643-010		SCREW,2-10 B/T
14	S0-0X8-KT1-001		F.PANEL-HRABS	B	87-255-073-410		SCREW,M2.6-6 B/M
15	S5-8X8-KTD-001		BTN-HRABS DETA	C	87-353-034-210		SCREW,2-5 P/T
16	S7-7X6-KT1-000		SPR,DETACHABLE SUS 304 WPB	D	87-253-072-410		SCREW,M2.6-5 PH
17	S5-8X8-KTC-001		BTN-HRABS BAND/CR	E	87-745-094-410		SCREW,3-6 B/T/B
18	S5-8X8-KTF-001		BTN,FF	F	87-265-071-410		SPECIAL SCREW FH M2.6-4
19	S5-8X8-KTE-001		BTN-HRABS REW	G	87-253-034-410		SCREW,M2-5 B/M
20	S7-1X5-KT5-100		SPR,BUTTON	H	S2-8X8-KT3-000		SCREW,2.6M-4 THIN
21	S8-48K-T67-900		ANT,SOCKET	I	87-741-096-410		SCREW,3-10 B/T
22	S5-8X7-KTF-002		BTN-EJECT (LONG)	J	87-251-096-410		SCREW,3-10 B/M
23	S5-9X8-KT1-000		JOINT LOCK				

SCHEMATIC DIAGRAM-1(X458)

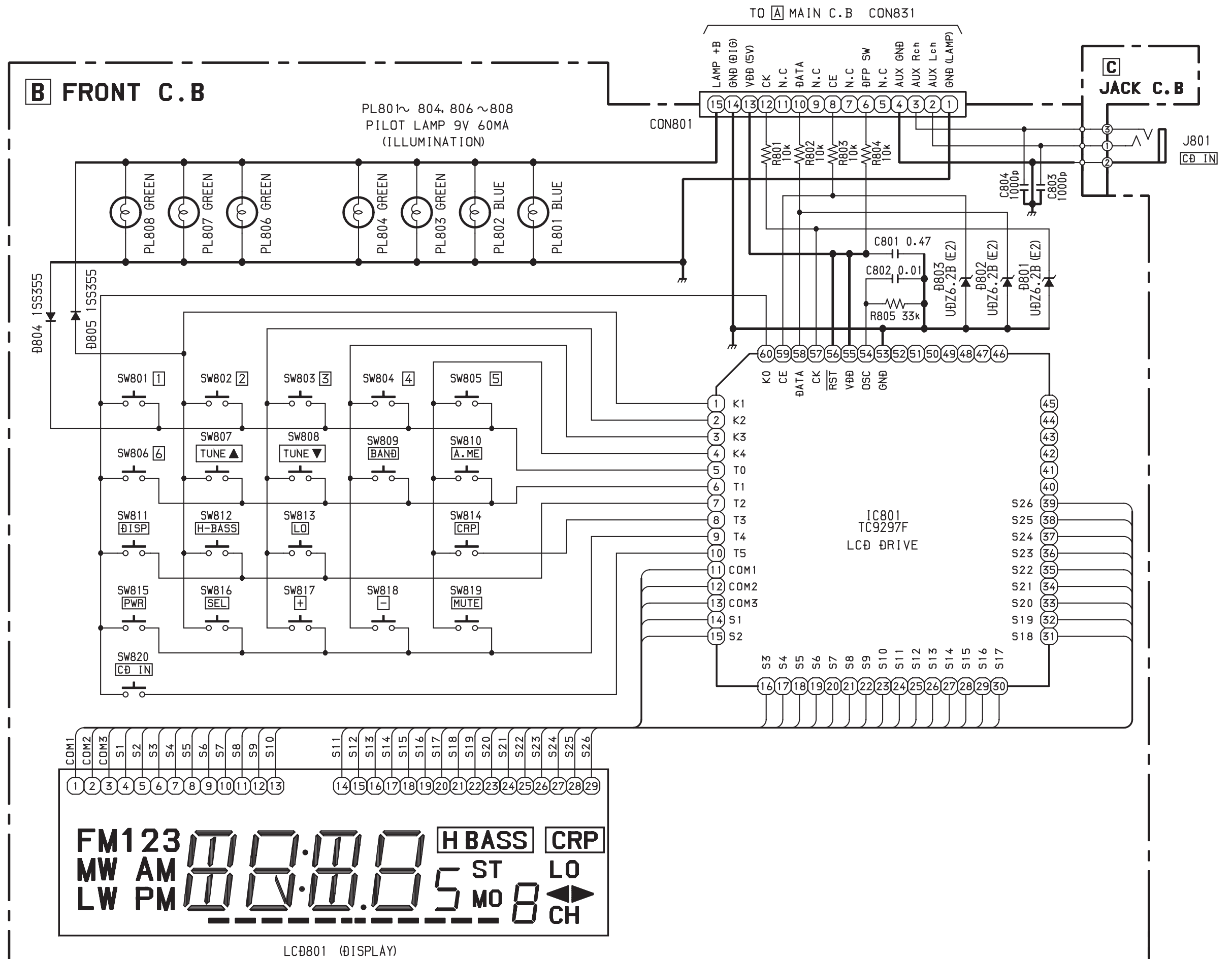


SCHEMATIC DIAGRAM-2(X218,258)



VOLTAGE MODE  
 NO MARK: TAPE, RADIO, AUX  
 ← AUDIO (PB) SIGNAL

TO FRONT C.B. CON601





サービス技術ニュース	
番号	連絡内容
G- -	
G- -	
G- -	

**アイワ株式会社**  
**AIWA CO.,LTD.**

737004

Tokyo Japan